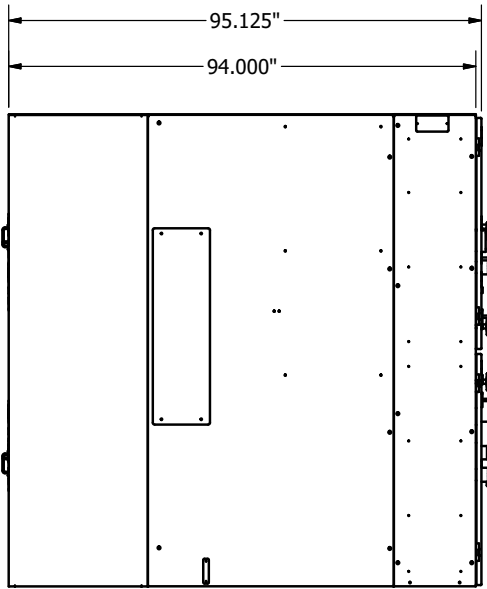


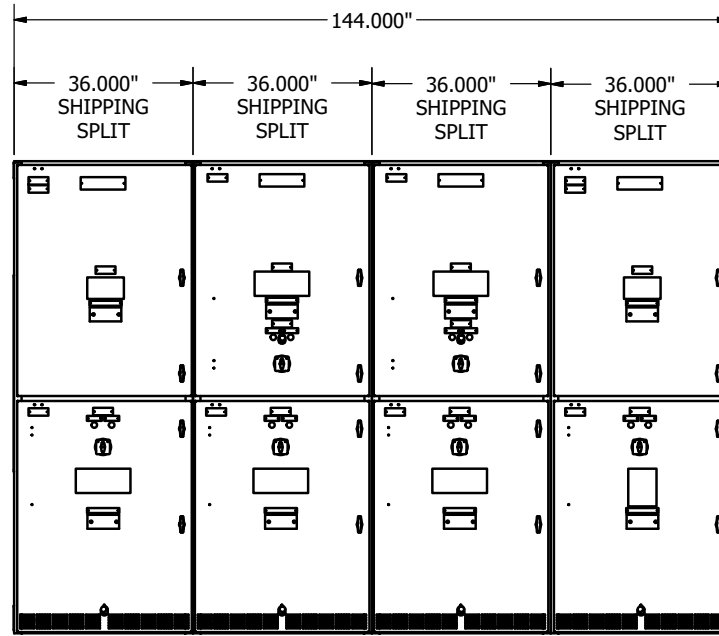
Parts List		
ITEM	QTY	PART NUMBER
1	4	MAIN BUS ENCLOSURE
2	24	POLYESTER INSULATOR
3	8	DANGER HIGH VOLTAGE SIGN
4	14	GRAB HANDLE
5	3	BUS SUPPORT WINDOW POLYESTER
6	4	GROUND BUS BAR
7	18	INSULATING BUS BOOT
8	18	INSULATING BUS BOOT
9	12	INSULATING BUS BOOT
10	12	CABLE SUPPORT
11	6	CABLE LANDING PAD FOR TOP ENTRY
12	16	COMPRESSION LATCH HANDLE
13	6	CABLE LANDING PAD FOR TOP ENTRY
14	6	CABLE LANDING PAD FOR TOP ENTRY
15	4	CABLE CHIMNEY
16	2	COMPARTMENT ISOLATION BARRIER
17	2	COMPARTMENT ISOLATION BARRIER

NOTE:

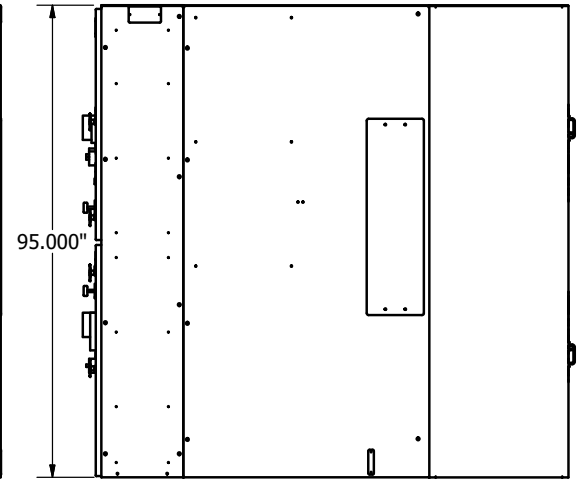
1. 4 SECTION (NEMA 1) SWGR LINEUP.
2. MATERIAL: 11GA, 12GA, 14GA CRS. 11GA, 12GA GALV. .250 GLASTIC CHANNEL. 1/4"X2" COPPER. 1/4"X6" COPPER.
3. PAINT APPLICATION WILL BE ANSI 61 GREY, SMOOTH FINISH.



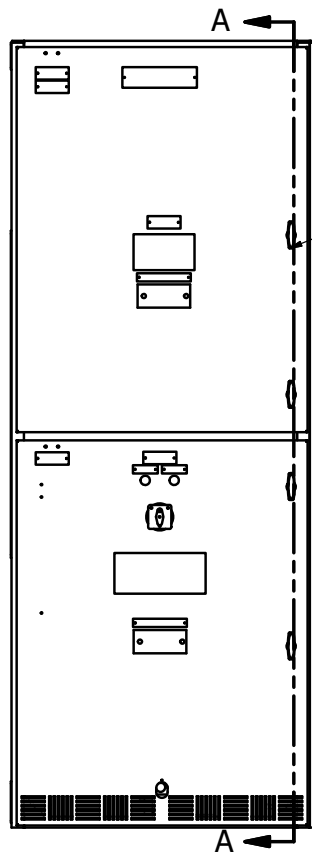
LH VIEW



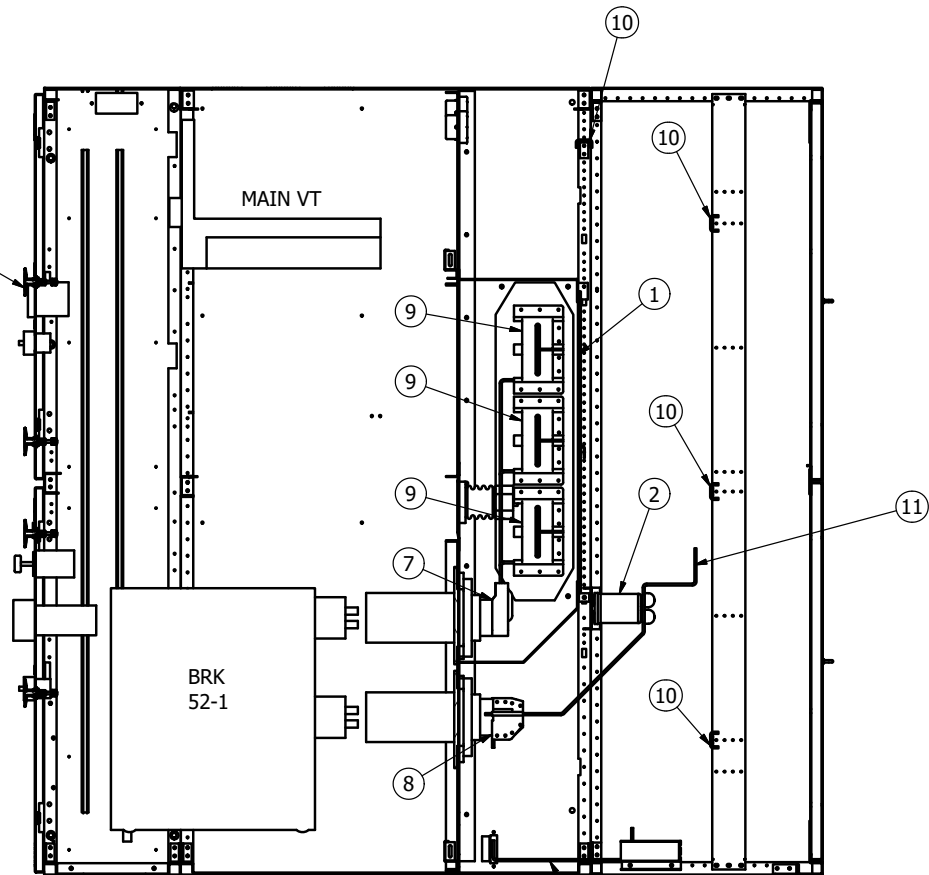
FRONT VIEW



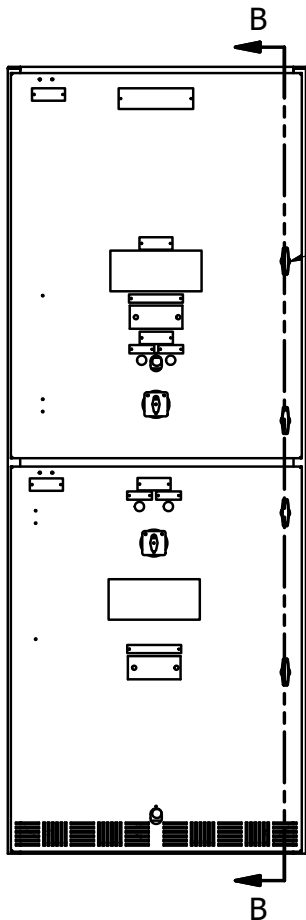
RH VIEW



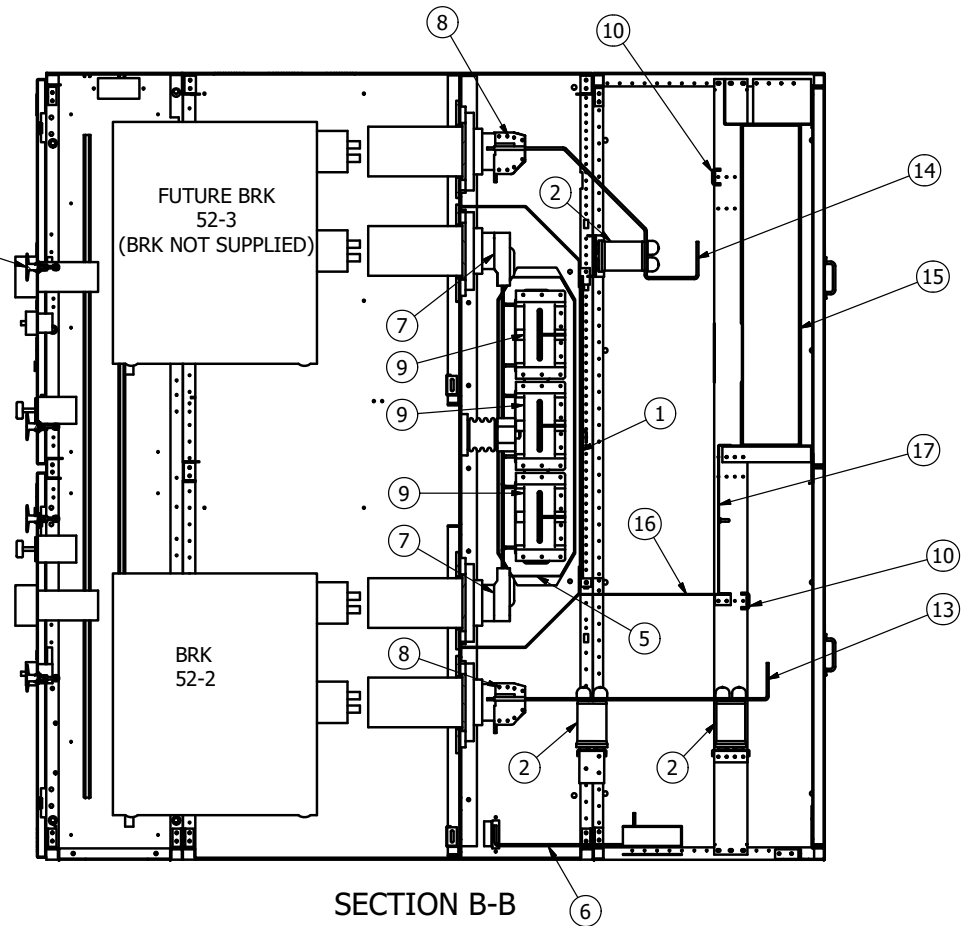
SECTION 101  
FRONT VIEW



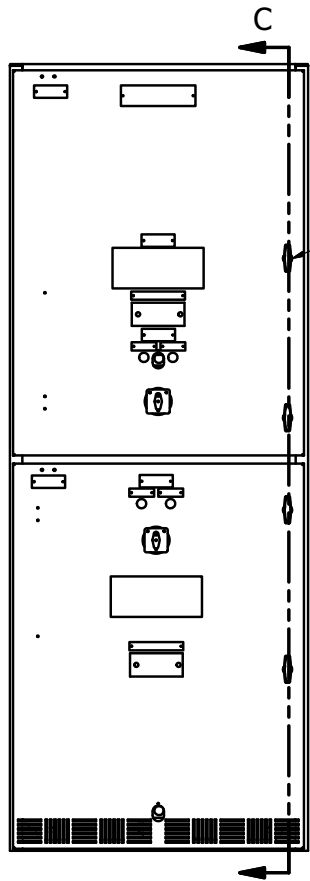
SECTION A-A  
RH INSIDE VIEW



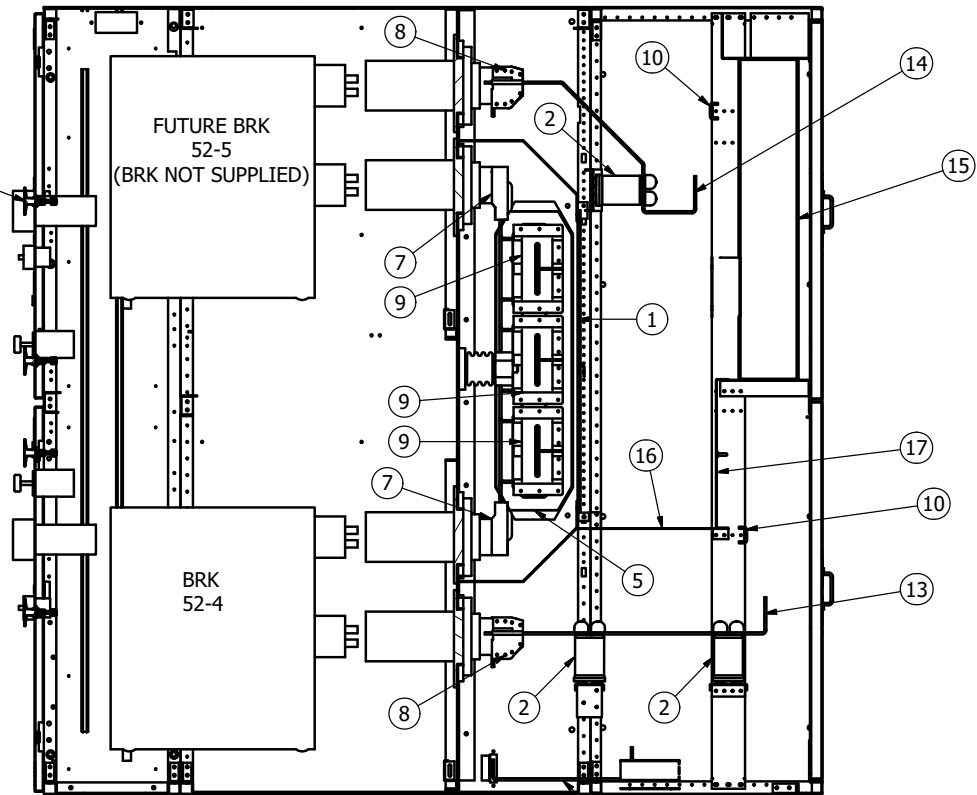
SECTION 102  
FRONT VIEW



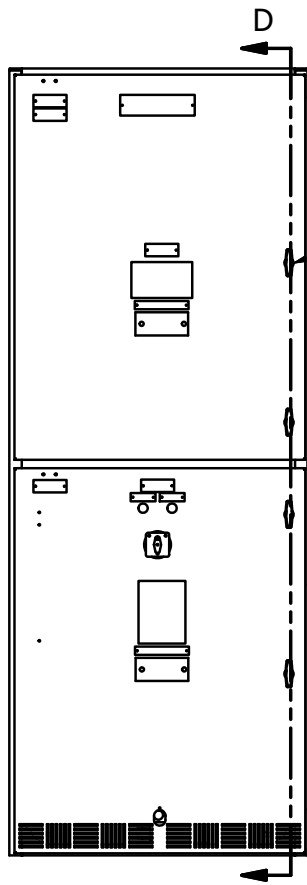
SECTION B-B  
RH INSIDE VIEW



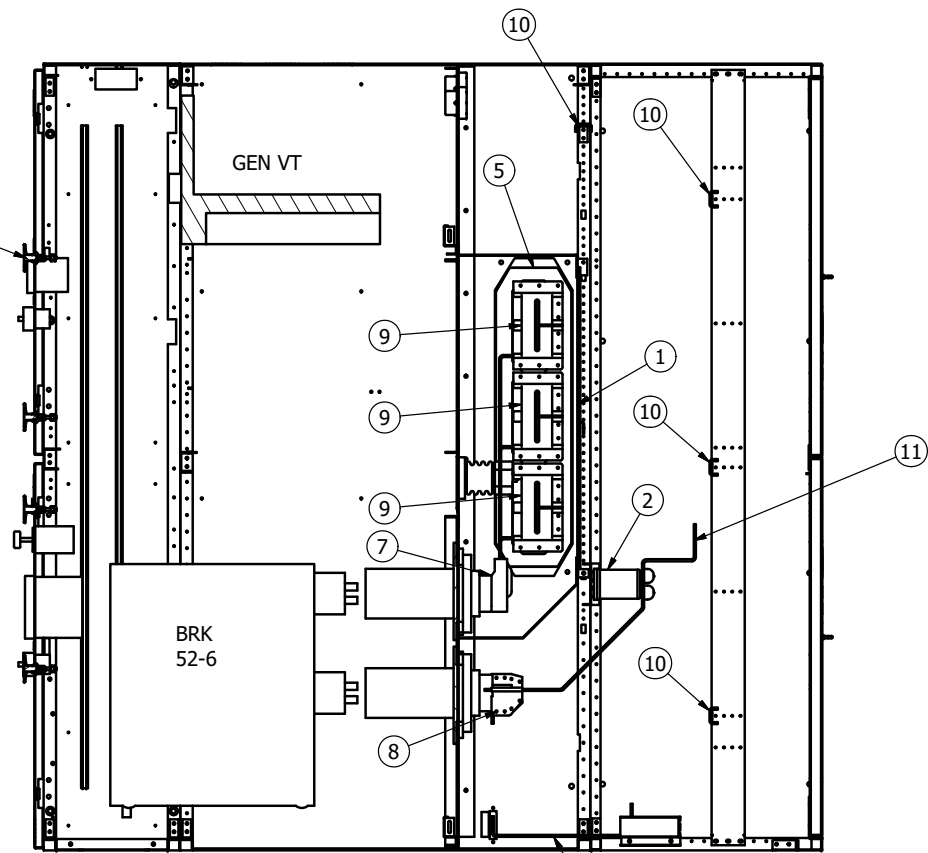
SECTION 103  
FRONT VIEW



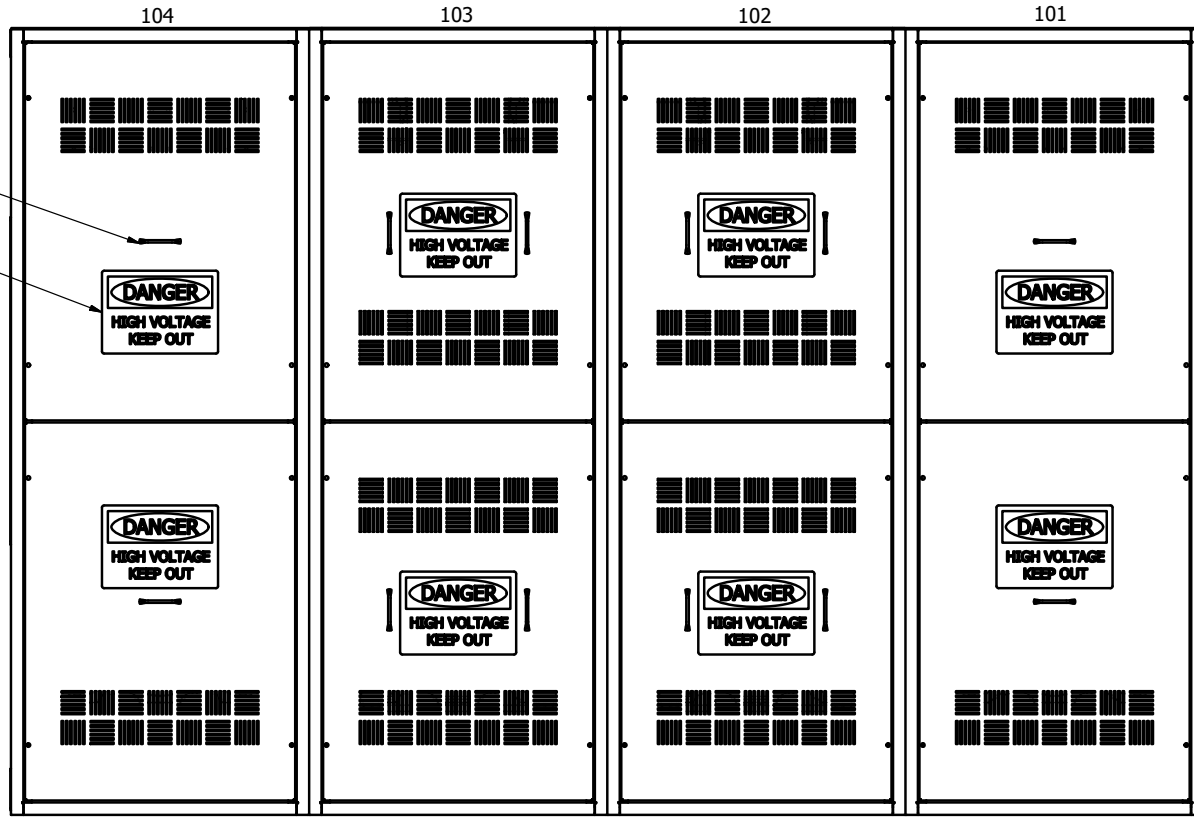
SECTION C-C  
RH INSIDE VIEW



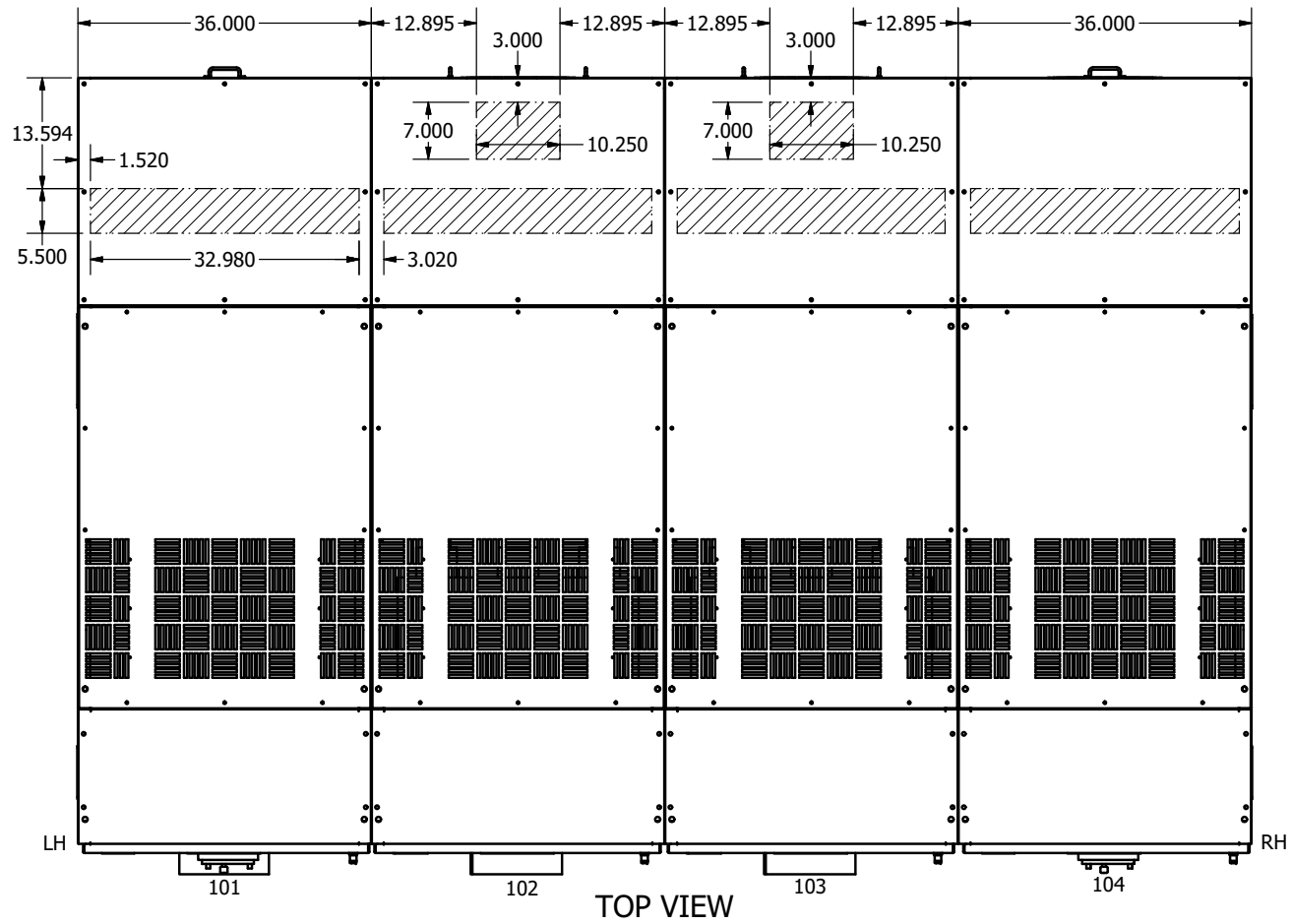
SECTION 104  
FRONT VIEW



SECTION D-D  
RH INSIDE VIEW



REAR VIEW



AVAILABLE SPACE FOR PRIMARY CABLE ENTRY/EXIT.  
 ACTUAL CUT OUT IS NOT SUPPLIED.

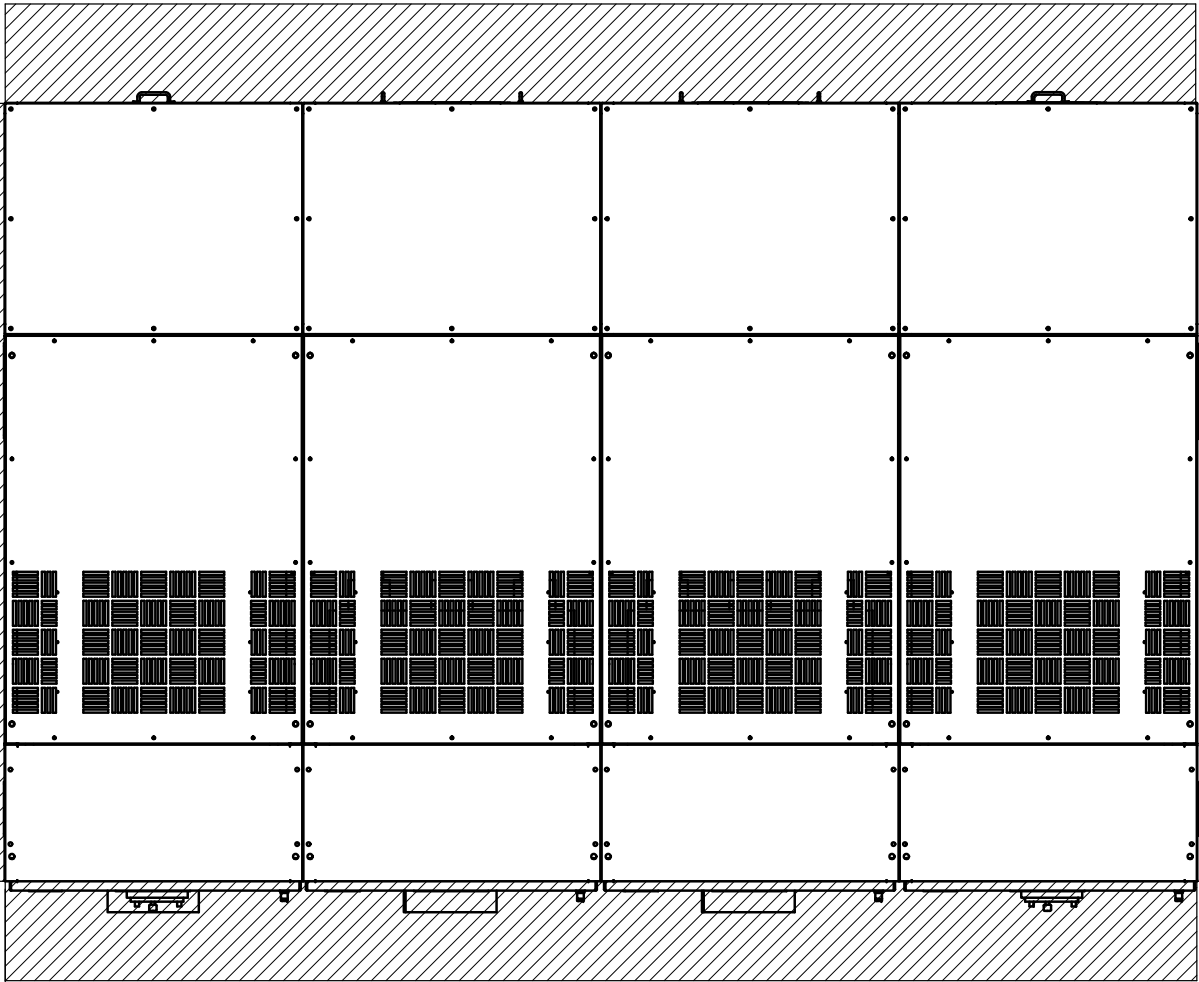


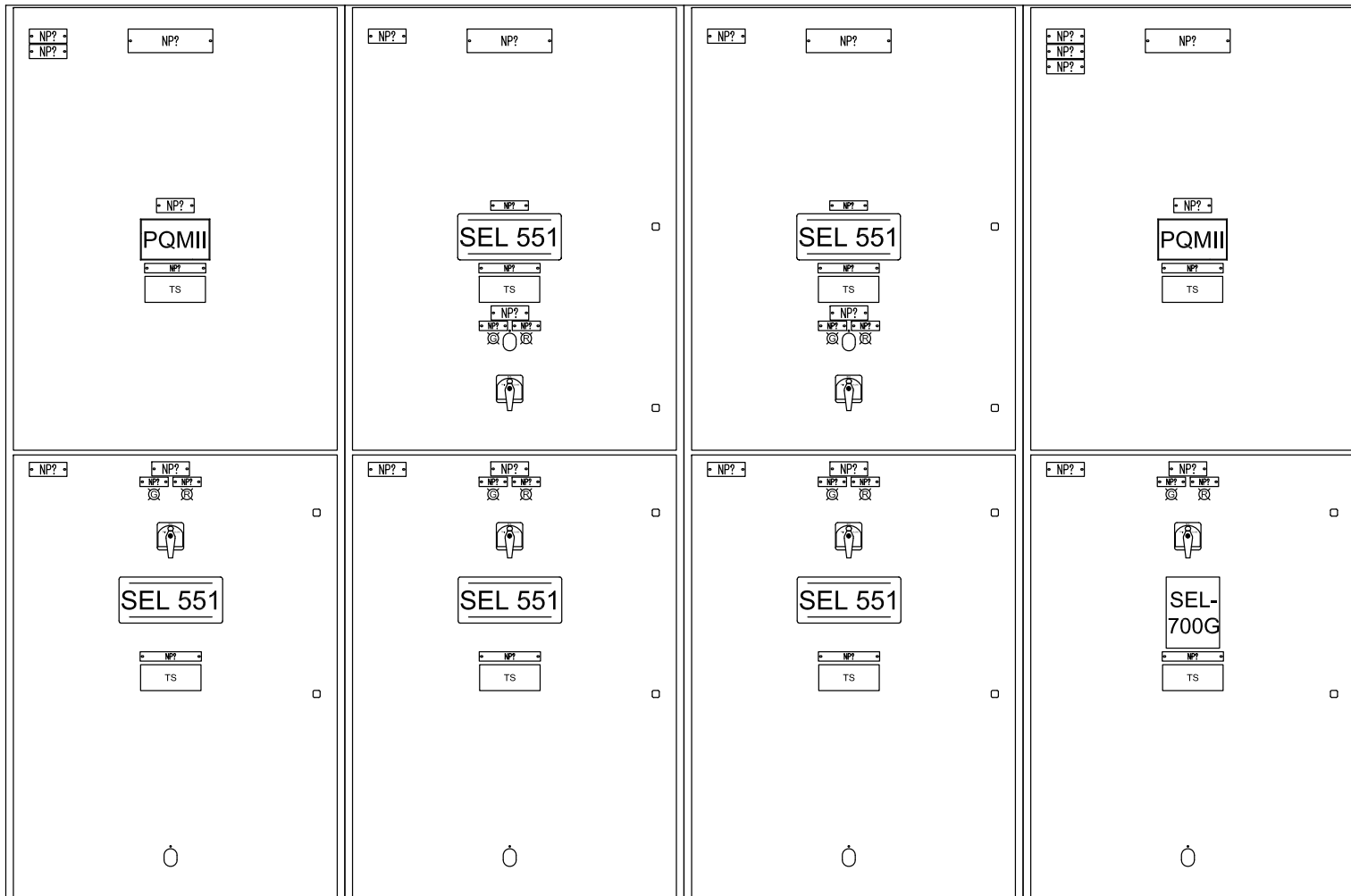
36"

32"

70"

TOP VIEW  
RECOMMENDED MINIMUM  
CLEARANCE



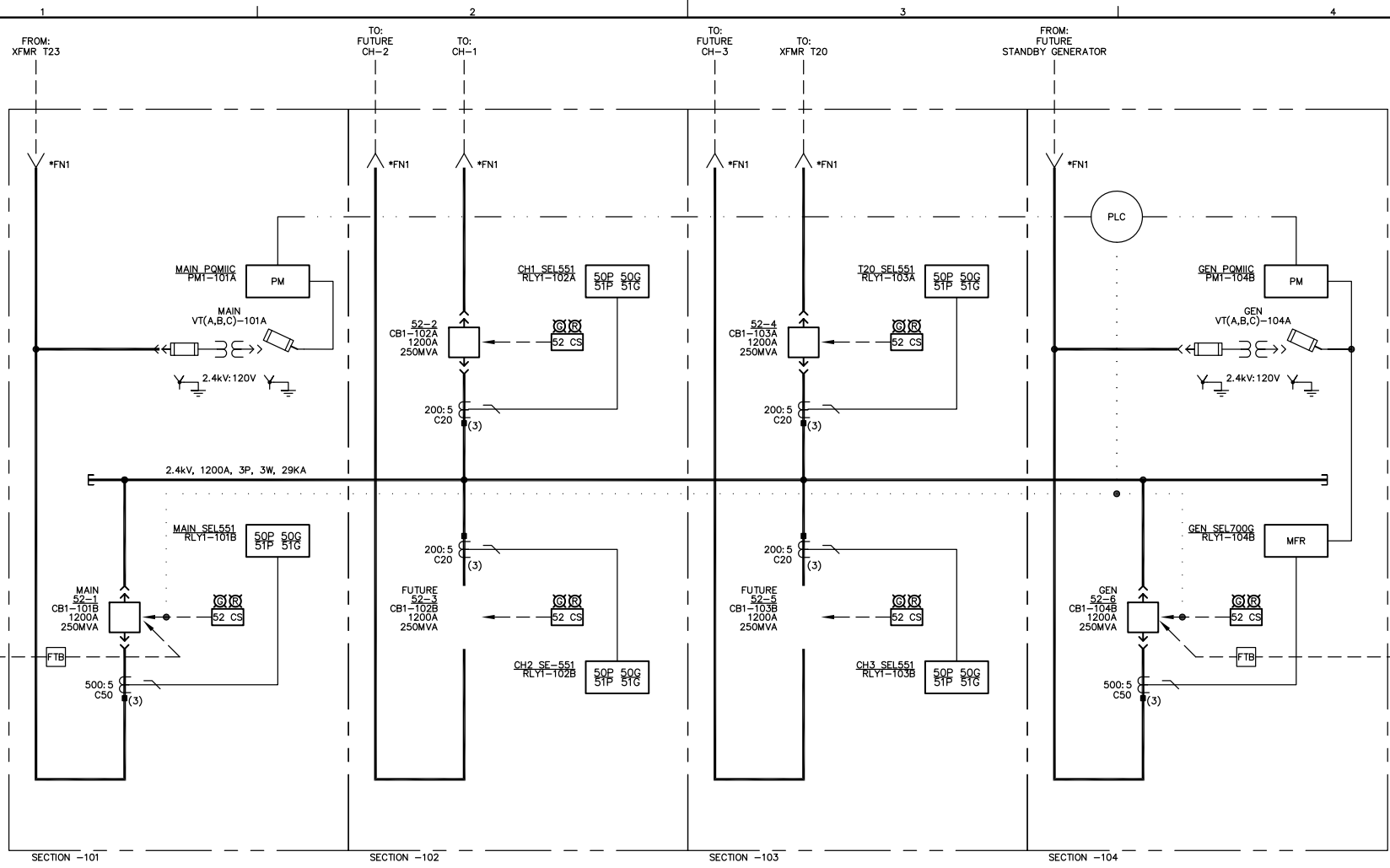


SECTION -101

SECTION -102

SECTION -103

SECTION -104



\*FN1 - ALL DENOTED JOINTS SHALL BE TAPED BY THE INSTALLER.  
 \*FN2 - ALL OTHER JOINTS ARE BOOTED UNLESS OTHERWISE NOTED.  
 — / — - DENOTES SHORTING TERMINAL BLOCK.  
 - - - - - DENOTES RS485 COMMUNICATION TO PLC.  
 . . . . . PLC CONTROL  
 NORMAL MODE MAIN 52-1 CLOSED & GEN 52-6 OPEN. WHEN THERE IS A LOSS OF VOLTAGE AT MAIN 52-1, A START SIGNAL IS SENT TO THE GENERATOR AND WHEN VOLTAGE IS VERIFIED AT GEN 52-6, OPEN MAIN 52-1 & THEN CLOSE GEN 52-6. AFTER VOLTAGE IS RE-ESTABLISHED AT MAIN 52-1 FOR 5 MINUTES AND SYNCHRONIZED WITH GENERATOR VOLTAGE THE PLC WILL RETURN THE LOAD VIA A CLOSED TRANSITION TO MAIN 52-1, AND WILL START GENERATOR COOL DOWN, AND 5 MINUTES LATER WILL SHUT DOWN GENERATOR.