

ES&S

Electrical Systems & Structures



1505 West 3rd Ave. Denver, Colorado 80223 Phone (303) 217-8711

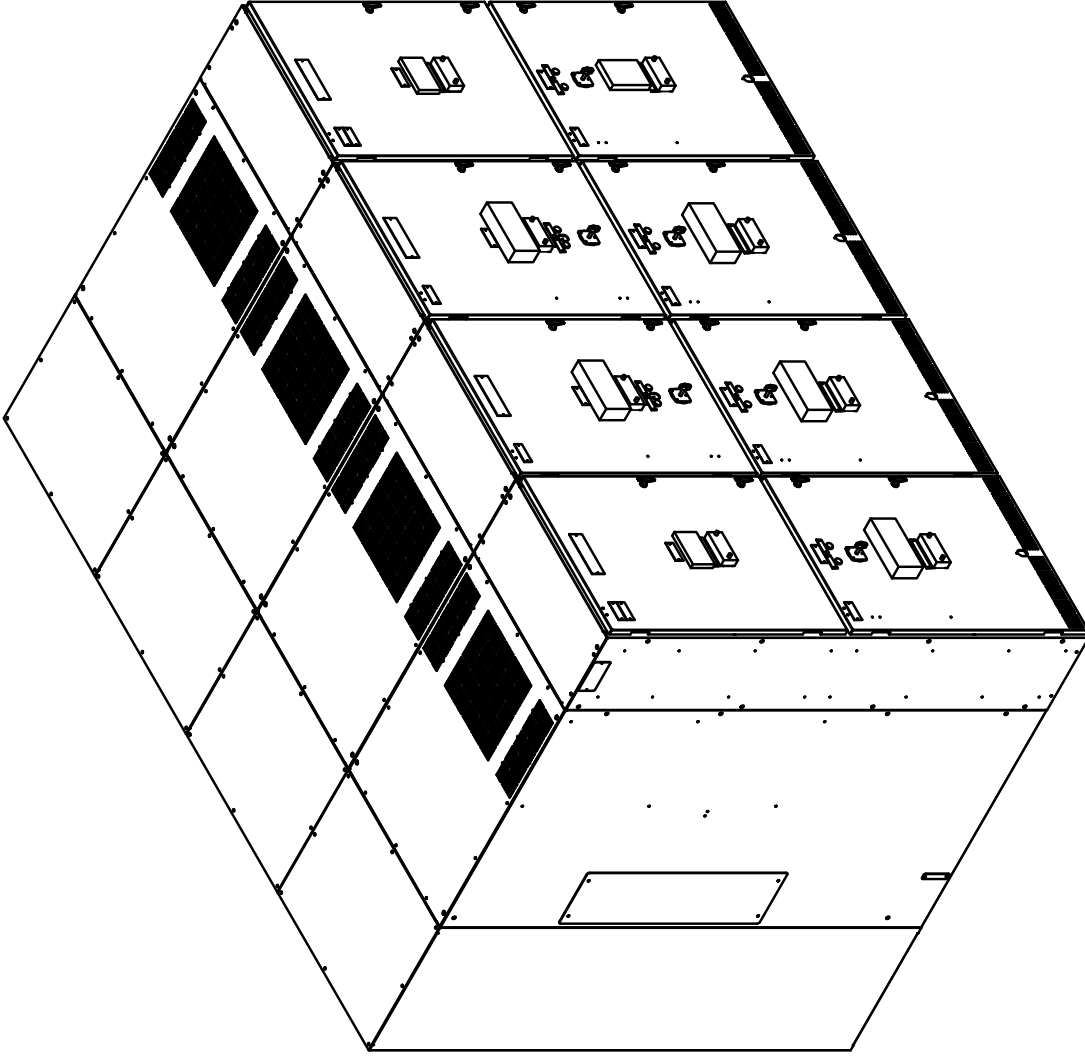


SUBMITTAL


version A

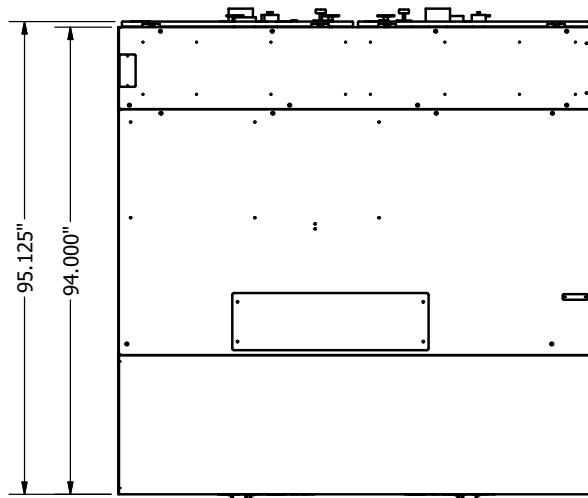
SWGR-1200A-2.4kV/3P/3W

Parts List		
ITEM	QTY	PART NUMBER
1	4	MAIN BUS ENCLOSURE
2	24	POLYESTER INSULATOR
3	8	DANGER HIGH VOLTAGE SIGN
4	14	GRAB HANDLE
5	3	BUS SUPPORT WINDOW POLYESTER
6	4	GROUND BUS BAR
7	18	INSULATING BUS BOOT
8	18	INSULATING BUS BOOT
9	12	INSULATING BUS BOOT
10	12	CABLE SUPPORT
11	6	CABLE LANDING PAD FOR TOP ENTRY
12	16	COMPRESSION LATCH HANDLE
13	6	CABLE LANDING PAD FOR TOP ENTRY
14	6	CABLE LANDING PAD FOR TOP ENTRY
15	4	CABLE CHIMNEY
16	2	COMPARTMENT ISOLATION BARRIER
17	2	COMPARTMENT ISOLATION BARRIER

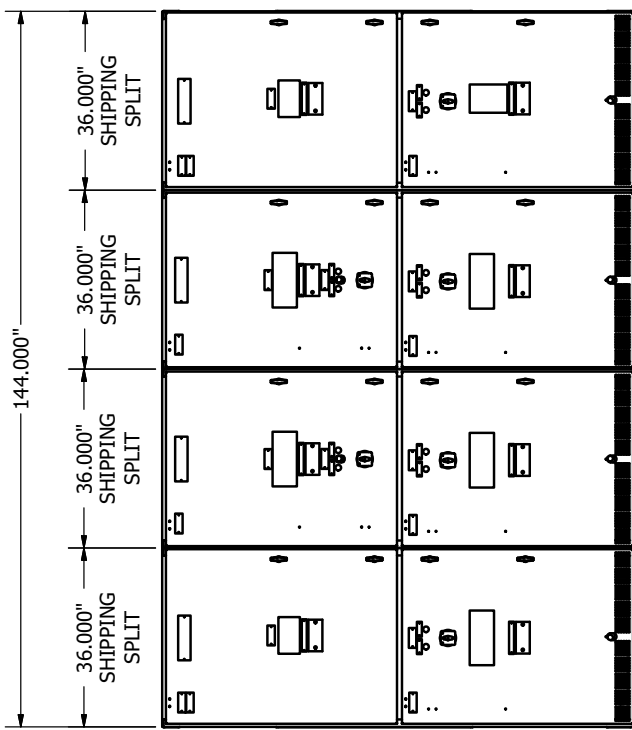


- NOTE:
- 4 SECTION (NEMA 1) SWGR LINEUP.
 - MATERIAL: 11GA, 12GA, 14GA CRS. 11GA, 12GA GALV. .250 GLASTIC CHANNEL. 1/4"X2" COPPER. 1/4"X6" COPPER.
 - PAINT APPLICATION WILL BE ANSI 61 GREY, SMOOTH FINISH.

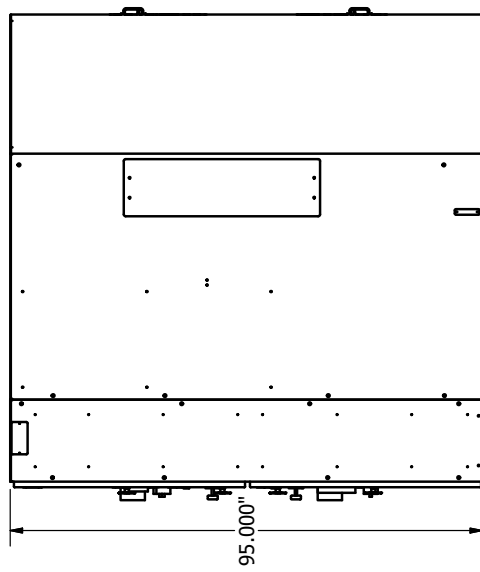
REVISION HISTORY			
REV	DESCRIPTION	DATE	APPROVED
A	RELEASED FOR SUBMITTAL	5/24/2011	C.R.
 METRON, INC. DENVER, CO.			
ELECTRICAL SYSTEMS & STRUCTURES			
SCHLUMBERGER - CHILLER PROJECT			
(DC5) SWGR-1200A-2.4kV/3P/3W			
MECHANICAL OUTLINE			
DRAWN: creichert	SIZE	DWS NO.	REV
CHECK:	B	Y111116-643700	A
APPD:	SCALE	SHEET	OF 10



LH VIEW



FRONT VIEW



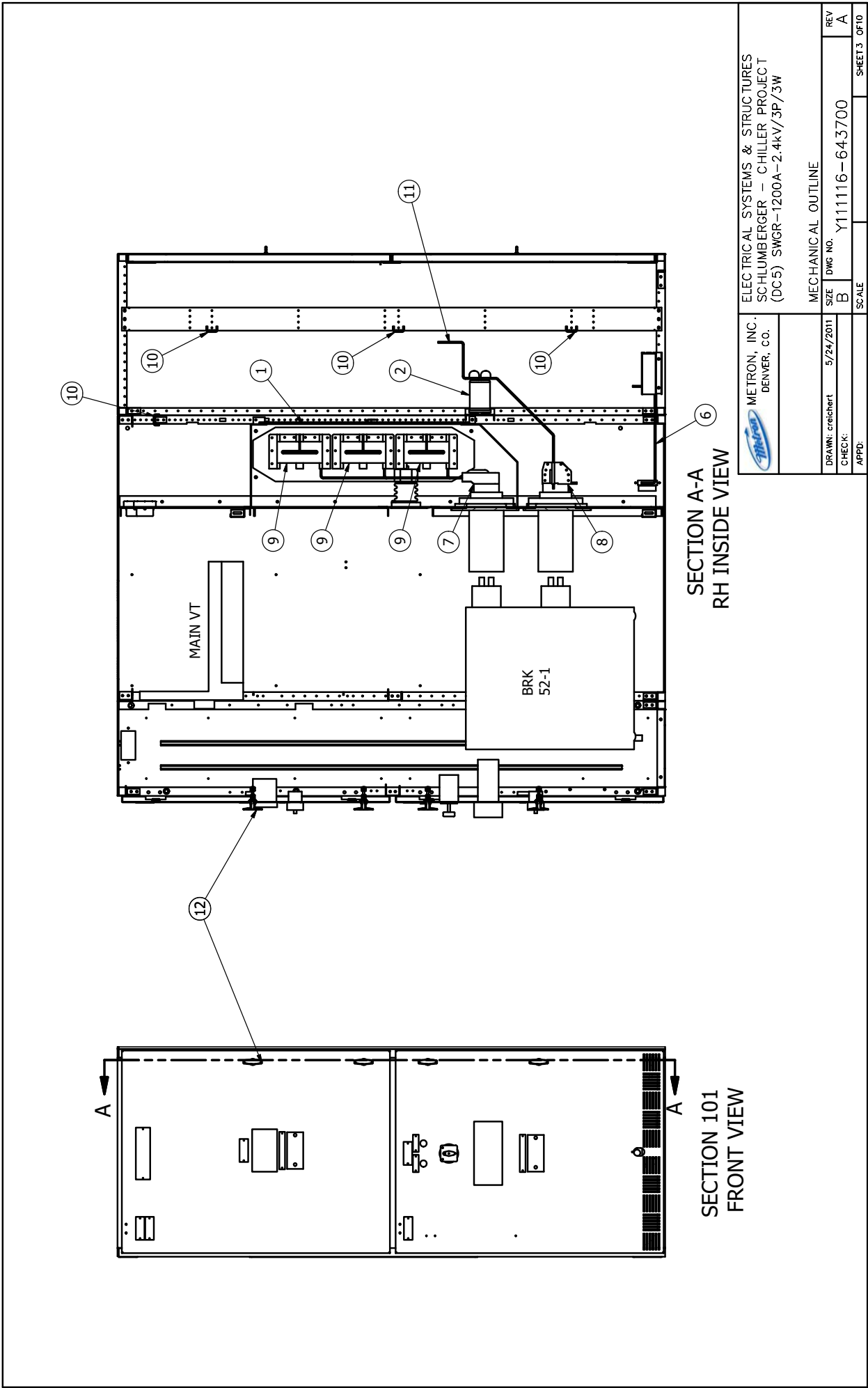
RH VIEW




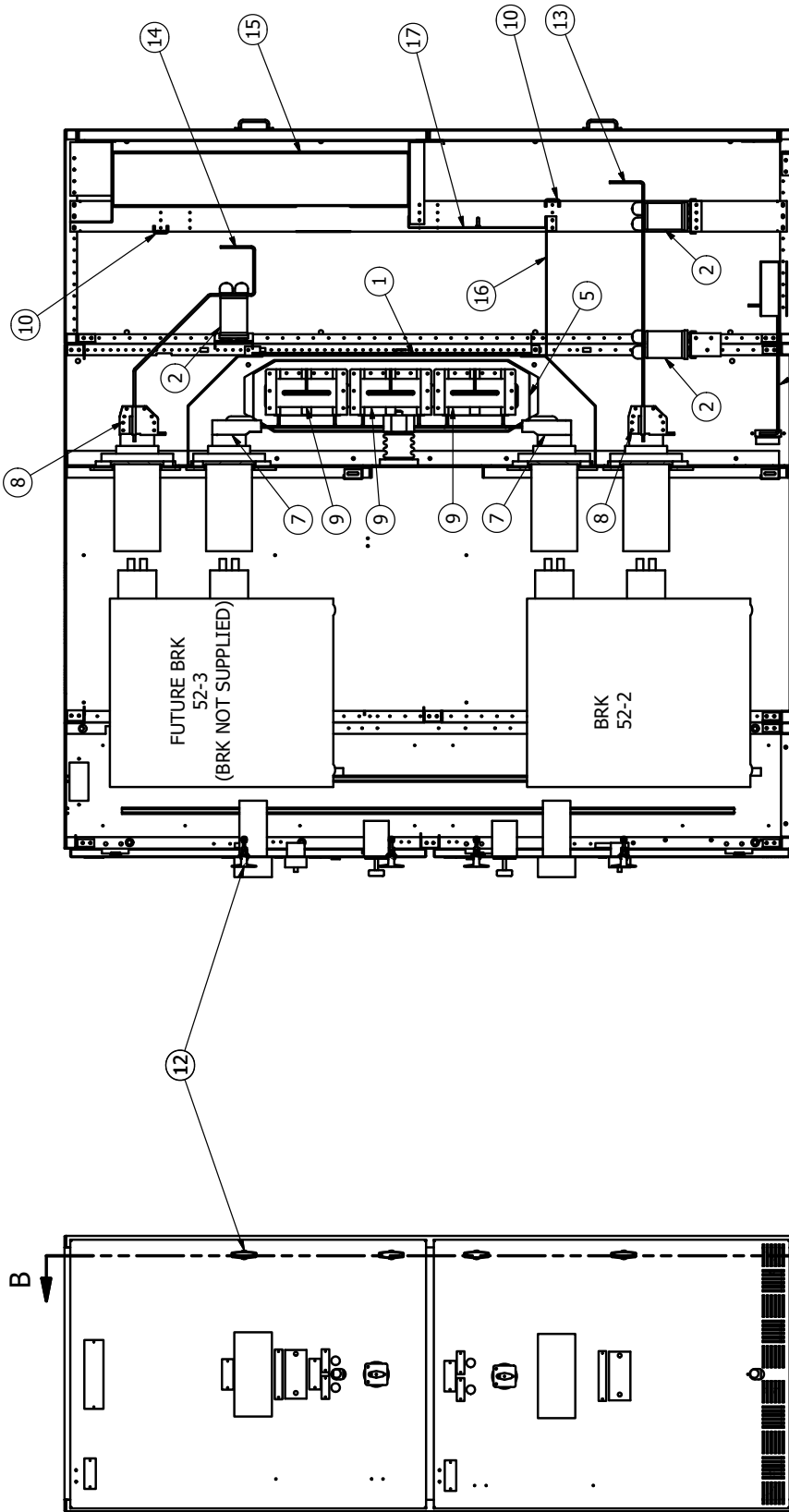
ELECTRICAL SYSTEMS & STRUCTURES
SCHLUMBERGER - CHILLER PROJECT
(DC5) SWGR-1200A-2.4kV/3P/3W

METRON, INC. DENVER, CO.	5/24/2011	SIZE	DWS NO.	REV
DRAWN: creichert		B	Y111116-643700	A
CHECK:				
APPD:				

MECHANICAL OUTLINE	
SCALE	SHEET2 OF10



		ELECTRICAL SYSTEMS & STRUCTURES SCHLUMBERGER - CHILLER PROJECT (DC5) SWGR-1200A-2.4kV/3P/3W	
DRAWN: creichert CHECK: [blank] APPD: [blank]	DATE: 5/24/2011	MECHANICAL OUTLINE SIZE: B DWS NO.: Y111116-643700	REV: A SHEET3 OF10



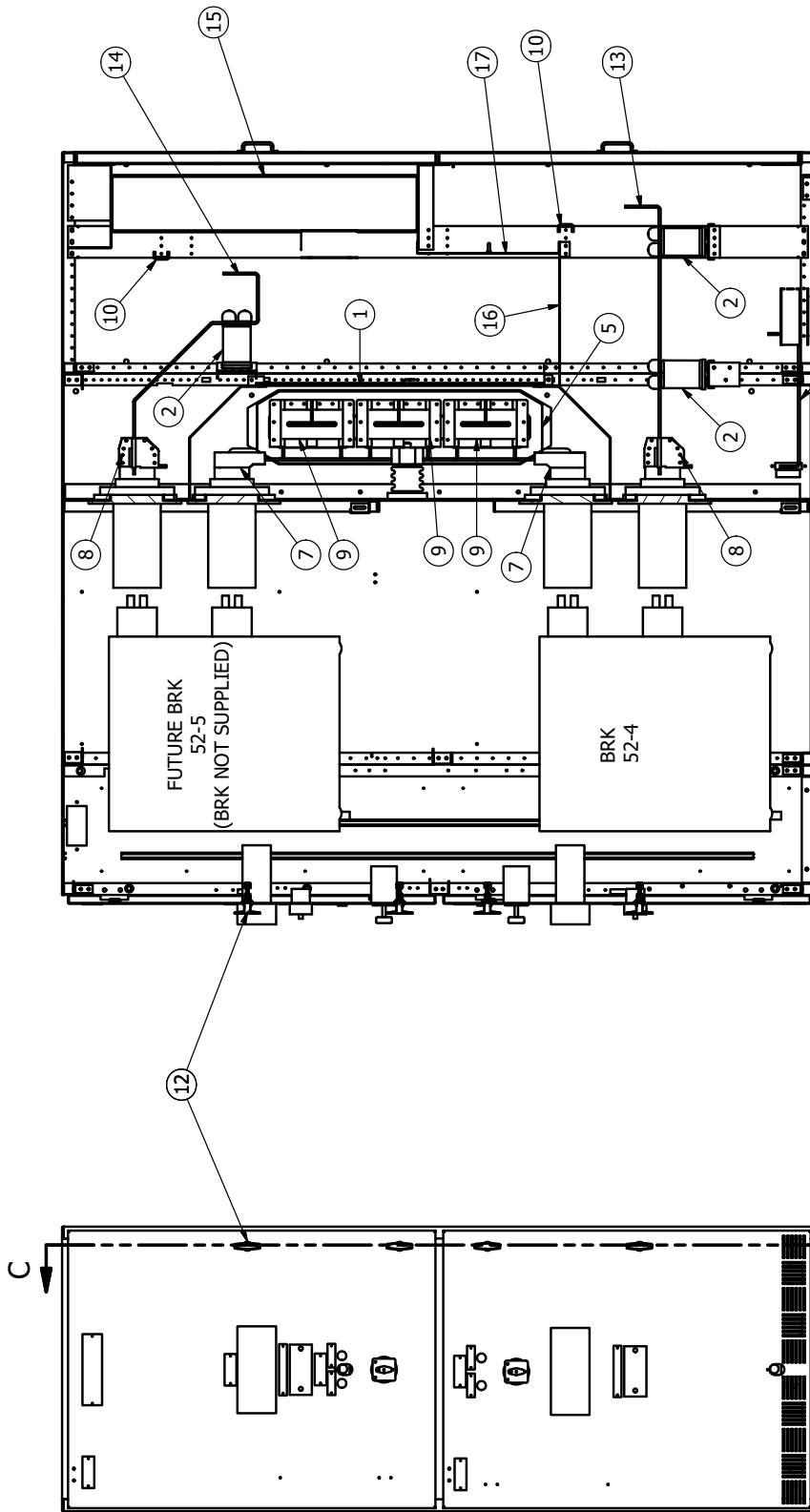
SECTION B-B
RH INSIDE VIEW

SECTION 102
FRONT VIEW

METRON, INC.
DENVER, CO.


ELECTRICAL SYSTEMS & STRUCTURES
SCHLUMBERGER - CHILLER PROJECT
(DC5) SWGR-1200A-2.4kV/3P/3W

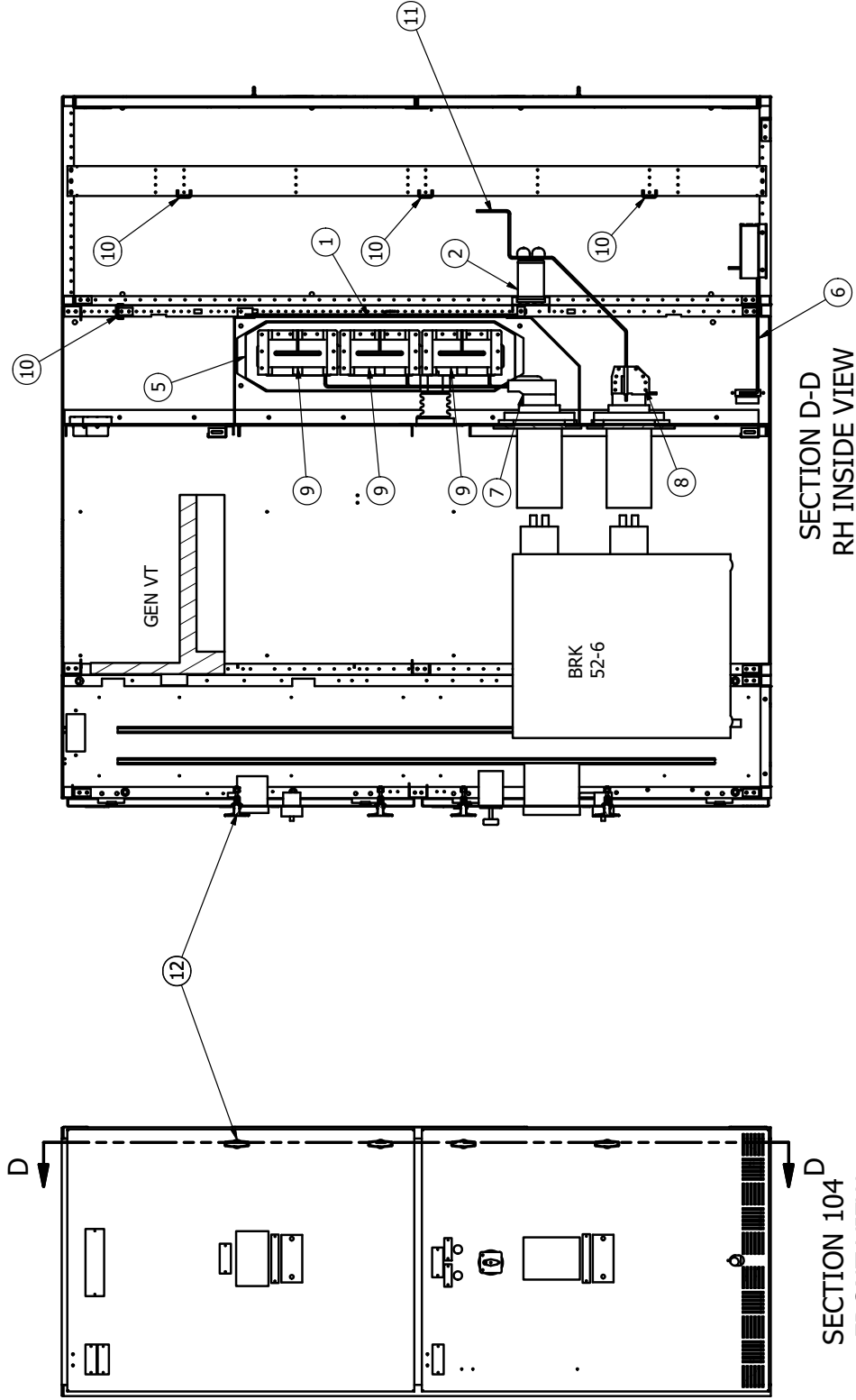
DRAWN: creichert		5/24/2011		MECHANICAL OUTLINE	
CHECK:	B	DWS NO.	Y111116-643700	REV	A
APPD:		SCALE		SHEET 4	OF 10




SECTION C-C
RH INSIDE VIEW

SECTION 103
FRONT VIEW

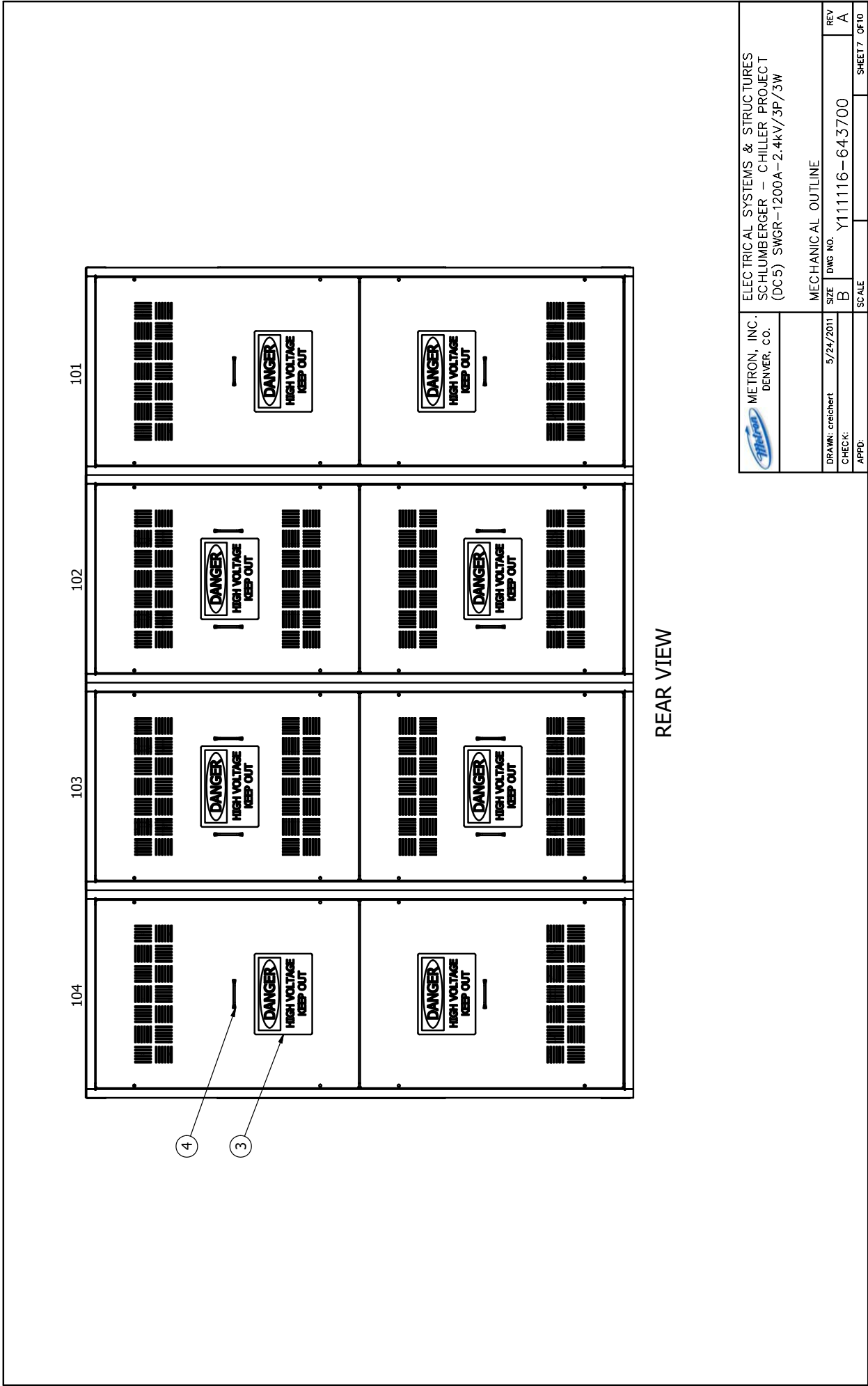
 METRON, INC. DENVER, CO.		ELECTRICAL SYSTEMS & STRUCTURES SCHLUMBERGER - CHILLER PROJECT (DC5) SWGR-1200A-2.4kV/3P/3W	
DRAWN: creichert CHECK: APPD:	DATE: 5/24/2011	MECHANICAL OUTLINE SIZE: B DWS NO.: Y111116-643700	REV: A SHEETS: 0F10




 METRON, INC. DENVER, CO.	ELECTRICAL SYSTEMS & STRUCTURES SCHLUMBERGER - CHILLER PROJECT (DC5) SWGR-1200A-2.4kV/3P/3W		REV	A
	DRAWN: creichert CHECK: APPD:	SIZE B	DWS NO. Y111116-643700	SHEET6
MECHANICAL OUTLINE		SCALE		

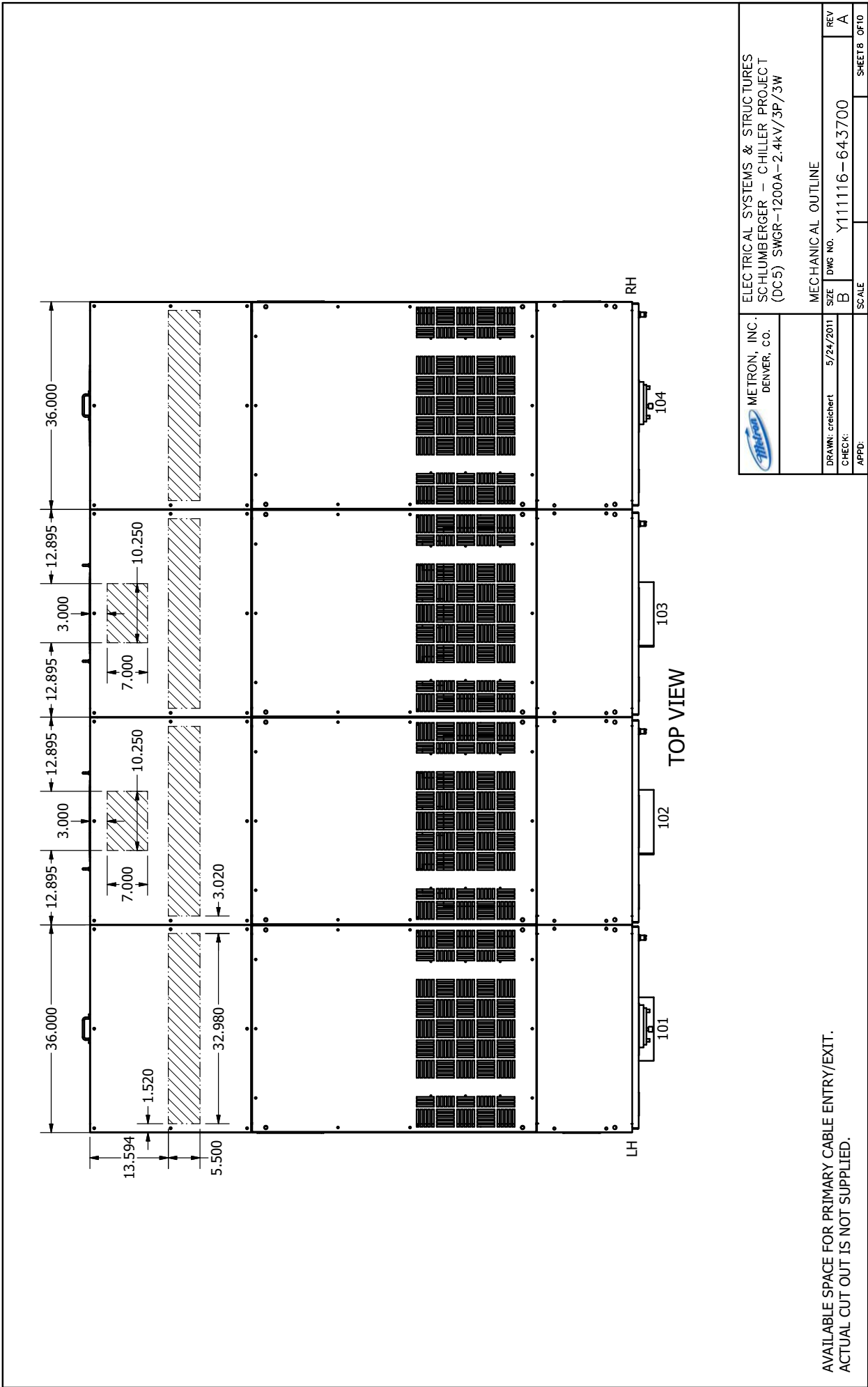
SECTION D-D
RH INSIDE VIEW

SECTION 104
FRONT VIEW




REAR VIEW

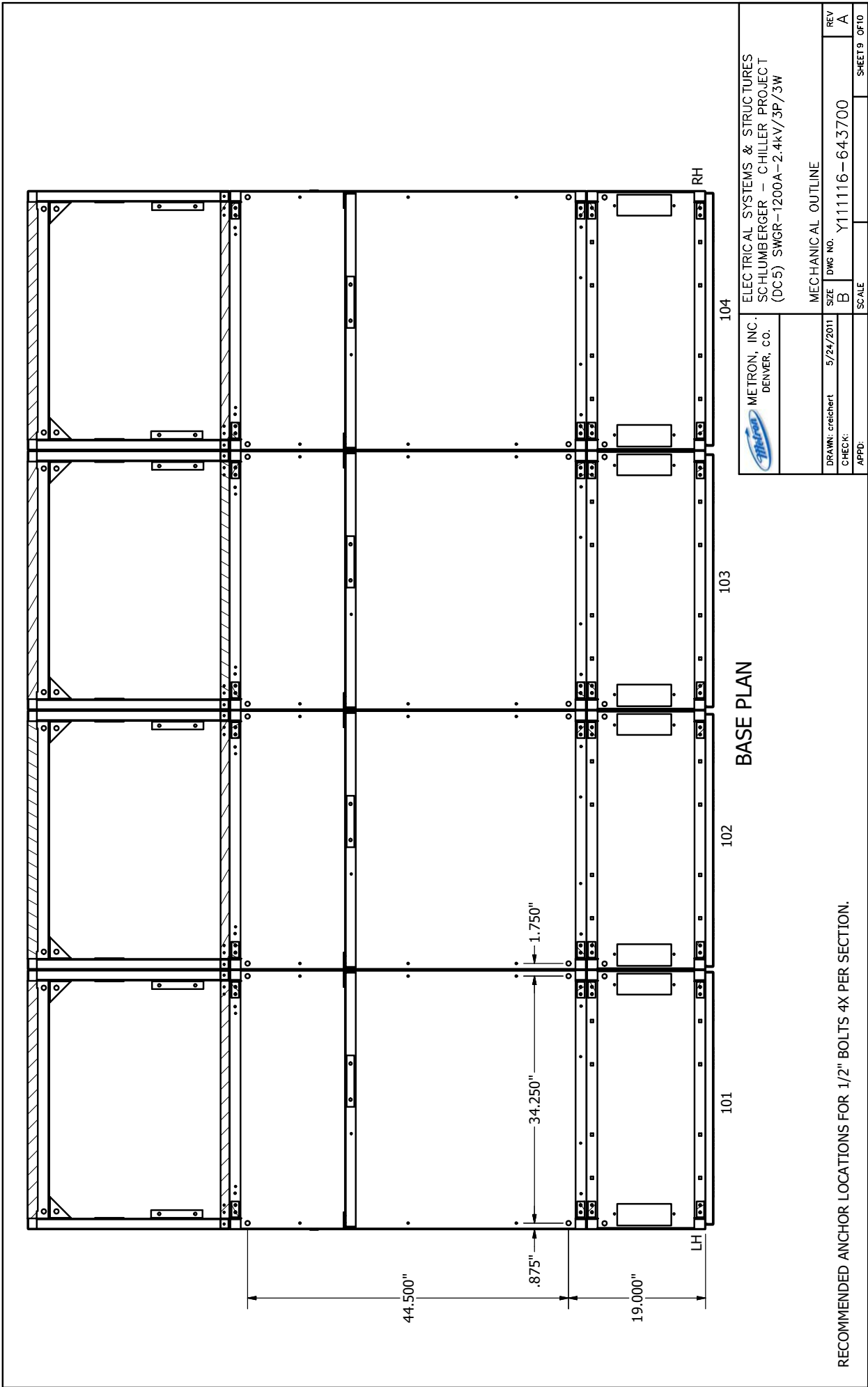
 METRON, INC. DENVER, CO.		ELECTRICAL SYSTEMS & STRUCTURES SCHLUMBERGER – CHILLER PROJECT (DC5) SWGR-1200A-2.4kV/3P/3W	
DRAWN: crotchert	5/24/2011	MECHANICAL OUTLINE	REV A
CHECK:		SIZE B	DWS NO. Y111116-643700
APPD:		SCALE	SHEET7 OF10




TOP VIEW

 METRON, INC. DENVER, CO.		ELECTRICAL SYSTEMS & STRUCTURES SCHLUMBERGER - CHILLER PROJECT (DC5) SWGR-1200A-2.4kV/3P/3W	
DRAWN: creichert	5/24/2011	MECHANICAL OUTLINE	REV
CHECK:		SIZE B	DWS NO. Y111116-643700
APPD:		SCALE	SHEETB 0F10

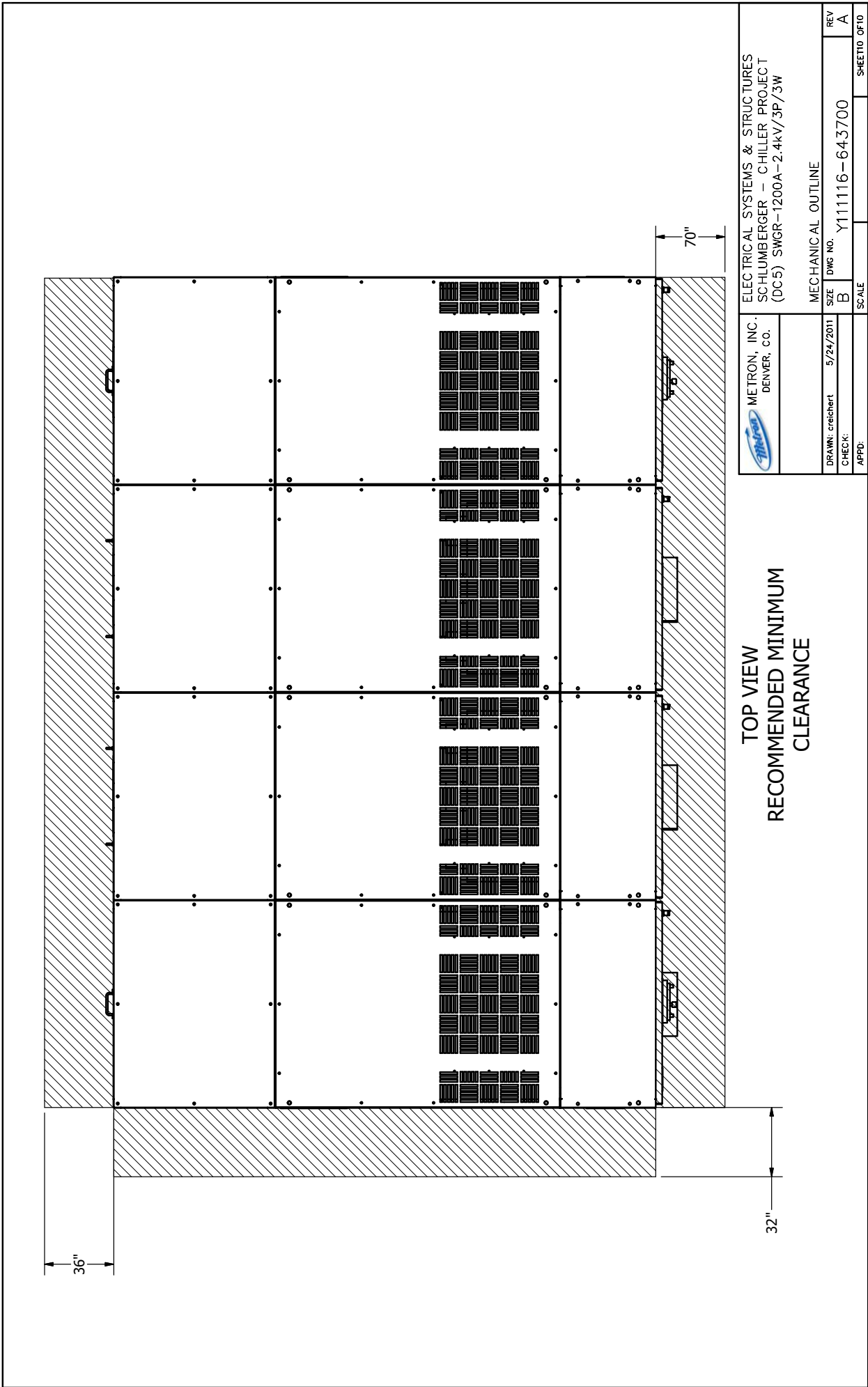
AVAILABLE SPACE FOR PRIMARY CABLE ENTRY/EXIT.
 ACTUAL CUT OUT IS NOT SUPPLIED.




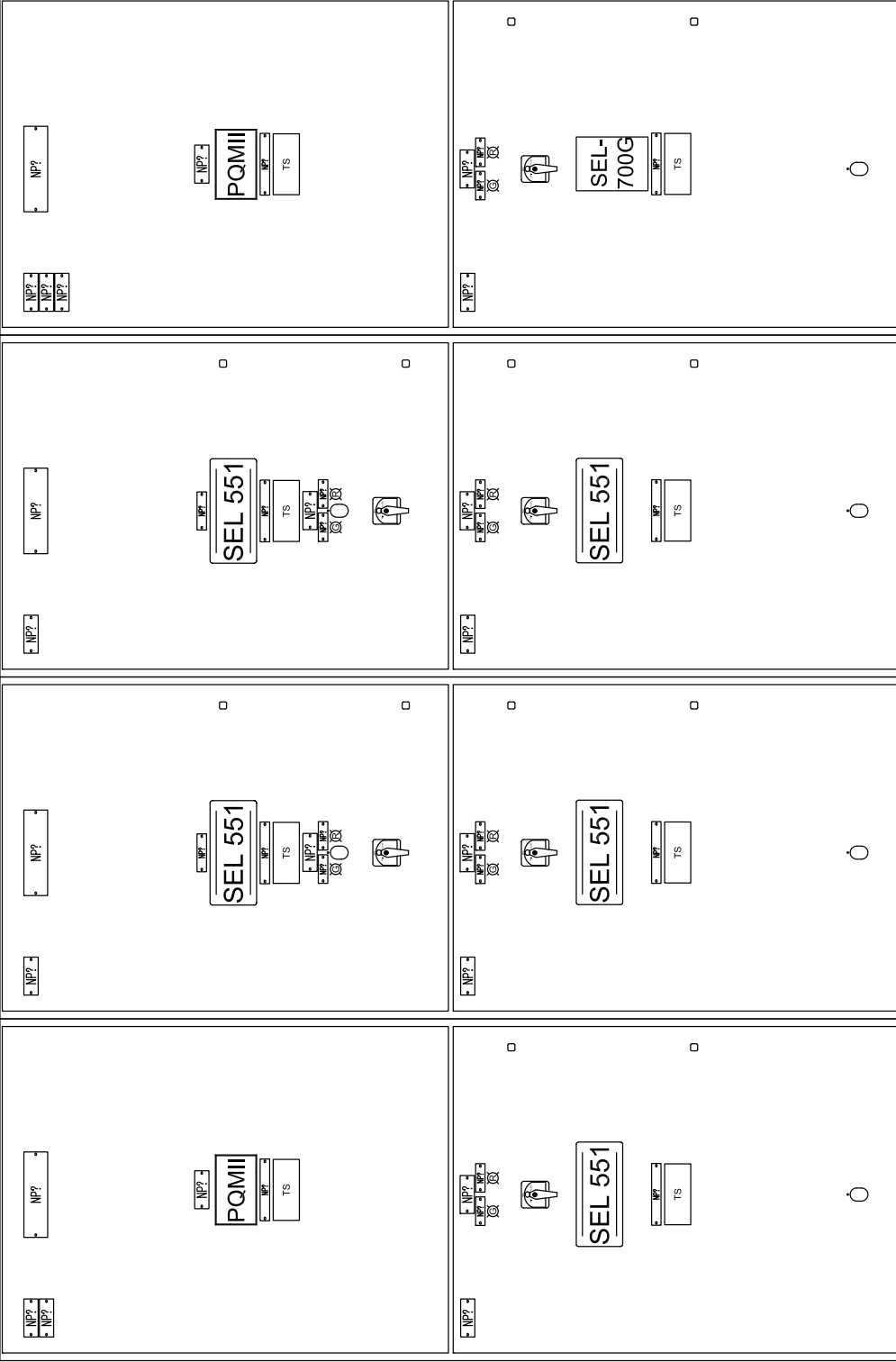
		METRON, INC. DENVER, CO.		ELECTRICAL SYSTEMS & STRUCTURES SCHLUMBERGER - CHILLER PROJECT (DC5) SWGR-1200A-2.4kV/3P/3W	
DRAWN: creichert	SIZE: B	DATE: 5/24/2011	DWS NO.: Y111116-643700	REV: A	SHEET: 9 OF 10
CHECK:	SCALE:	MECHANICAL OUTLINE			
APPD:	MECHANICAL OUTLINE				

BASE PLAN

RECOMMENDED ANCHOR LOCATIONS FOR 1/2" BOLTS 4X PER SECTION.



 METRON, INC. DENVER, CO.		ELECTRICAL SYSTEMS & STRUCTURES SCHLUMBERGER – CHILLER PROJECT (DC5) SWGR-1200A-2.4kV/3P/3W	
DRAWN: creichert	5/24/2011	MECHANICAL OUTLINE	REV
CHECK:		DWS NO. Y111116-643700	A
APPD:		SCALE	SHEETID: 0F10

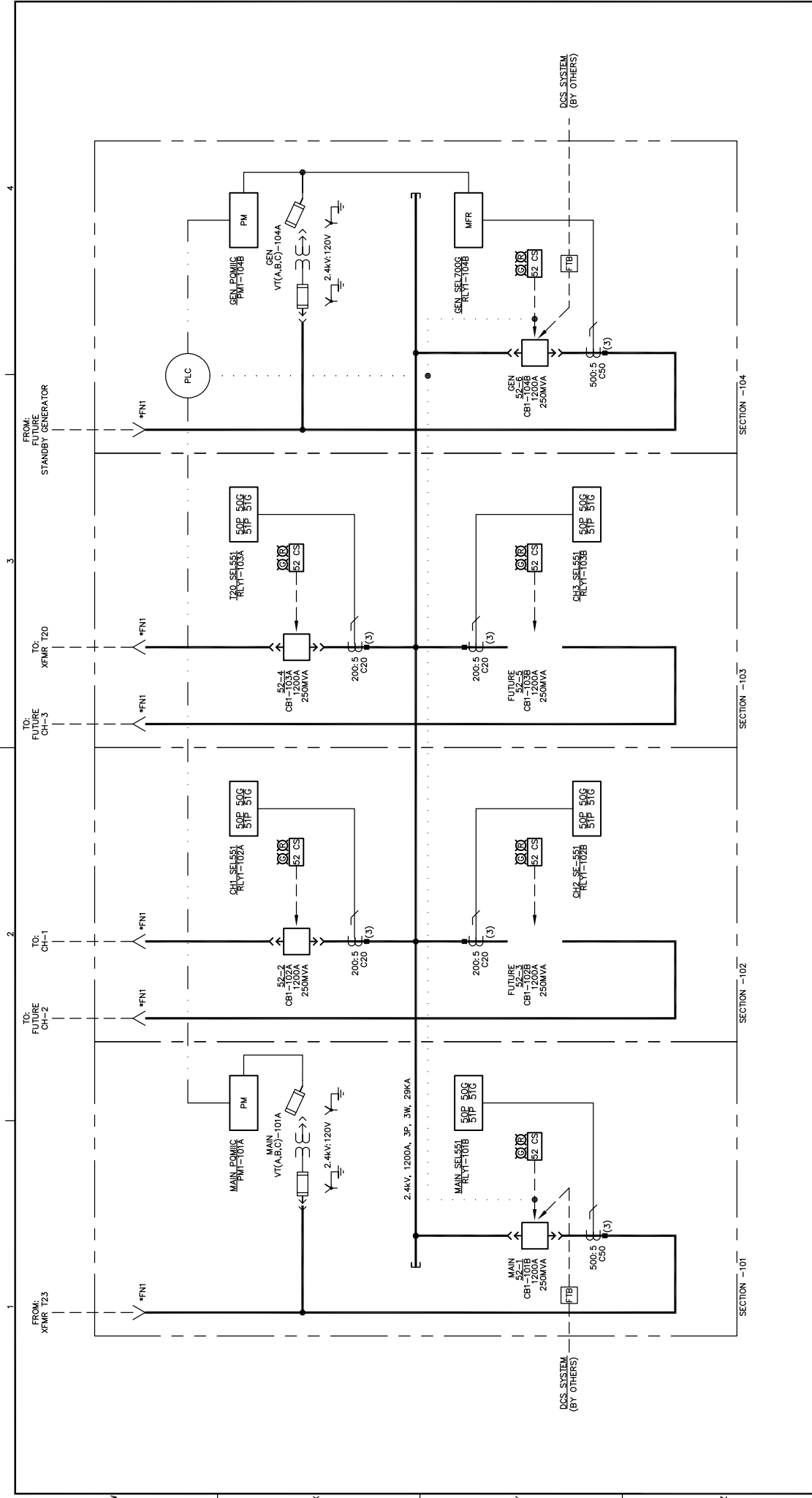


SECTION -101 SECTION -102 SECTION -103 SECTION -104

REVISIONS		DATE	APPROVED
REV	DESCRIPTION		
A	SUBMITTED FOR APPROVAL	06/10/2011	Z.E.

METRON, INC. DENVER, CO.		ELECTRICAL SYSTEMS & STRUCTURES SCHLUMBERGER – CHILLER PROJECT (DC5) SWGR-1200A-2.4kV/3P/3W	
		COMPONENT AND NAMEPLATE OUTLINE NAMEPLATE & DOOR COMPONENT VIEW	
DRAWN	Z.E.	06/01/2011	SIZE DWG NO. Y111109-643700-03
CHECK			REV A
APPD			SHEET 1 OF 1

NAMEPLATE SCHEDULE REF DWG: Y111109-643700-04



REVISIONS		DATE	APPROVED
REV	DESCRIPTION	06/10/2011	Z.E.
A	SUBMITTED FOR APPROVAL		

FROM: FUTURE STANDBY GENERATOR		TO: FUTURE CH-2		TO: FUTURE CH-1		TO: FUTURE CH-3		TO: FUTURE STANDBY GENERATOR	
FROM: XFRM T23	TO: FUTURE CH-2	TO: FUTURE CH-1	TO: FUTURE CH-3	TO: FUTURE STANDBY GENERATOR	TO: FUTURE STANDBY GENERATOR	TO: FUTURE STANDBY GENERATOR	TO: FUTURE STANDBY GENERATOR	TO: FUTURE STANDBY GENERATOR	TO: FUTURE STANDBY GENERATOR

ELECTRICAL SYSTEMS & STRUCTURES SCHLUMBERGER - CHILLER PROJECT (DCS) SWGR-1200A-2.4kV/3P/3W		METRON, INC. DENVER, CO.		ONE LINE	
SCALE	N.T.S.	DWG NO.	Y111109-643700-01	REV	A
CHECK	APPD	Z.E.	05/17/2011	SIZE	B
			SHEET 1 OF 1		

*FNI - ALL DENOTED JOINTS SHALL BE TAPED BY THE INSTALLER.
 *FNZ - ALL OTHER JOINTS ARE BOOTED UNLESS OTHERWISE NOTED.
 / - DENOTES SHORTING TERMINAL BLOCK.
 - - - - - DENOTES RS485 COMMUNICATION TO PLC.
 P.L.C. CONTROL
 NORMAL MODE MAIN 52-1 CLOSED & GEN 52-6 OPEN. WHEN THERE IS A LOSS OF VOLTAGE AT MAIN 52-1, A START SIGNAL IS SENT TO THE GENERATOR AND WHEN VOLTAGE IS VERIFIED AT GEN 52-6, OPEN MAIN 52-1 & THEN CLOSE GEN 52-6. AFTER VOLTAGE IS RE-ESTABLISHED, MAIN 52-1 WILL CLOSE TO RE-ESTABLISH LOAD TO THE CHILLER. MAIN 52-1 WILL THEN RETURN THE LOAD VIA A CLOSED TRANSITION TO MAIN 52-1, AND WILL START GENERATOR COOL DOWN, AND 5 MINUTES LATER WILL SHUT DOWN GENERATOR.