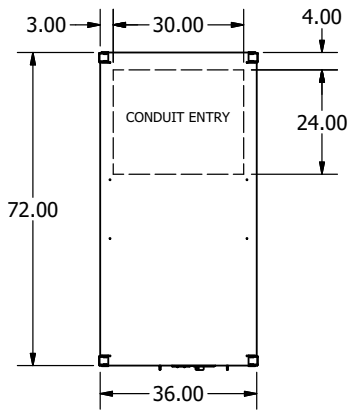
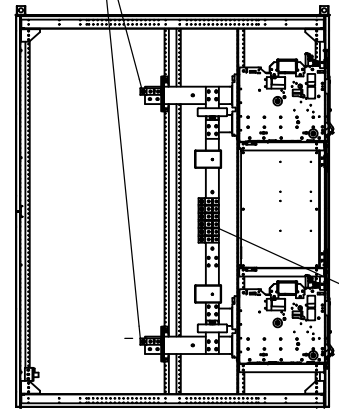


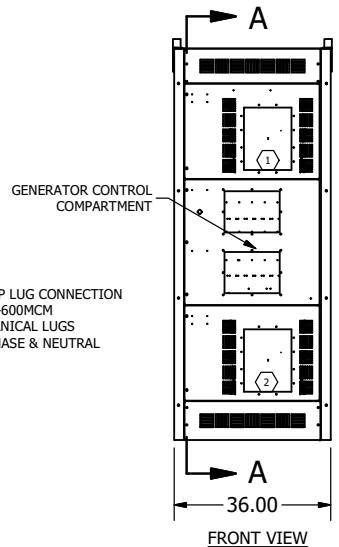
REVISION HISTORY		
REV	DESCRIPTION	DATE
A	CHANGED TO 300A TRIP PER CUSTOMER REQUEST	8/1/2011
B	AS BUILT	9/29/2011



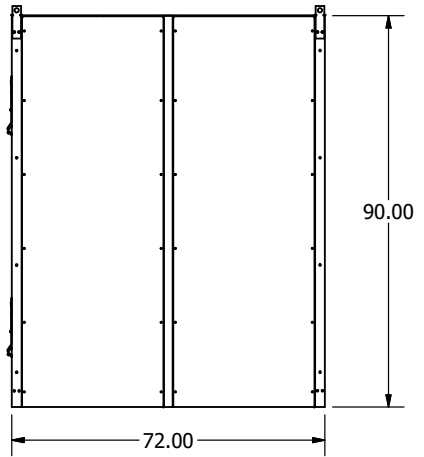
800AMP LUG CONNECTION
(2) #2-600MCM
MECHANICAL LUGS
PER PHASE & NEUTRAL



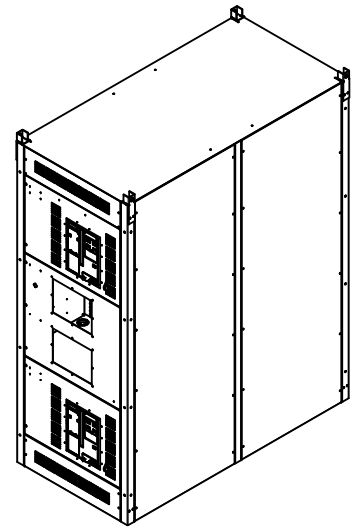
SECTION A-A



FRONT VIEW



RIGHT SIDE VIEW



- ① CIRCUIT BREAKER, "52-G1", 800AF/300AT, ELECTRONIC TRIP, 65KAIC, 100% RATED 3 POLE, DRAWOUT, ELECTRICALLY OPERATED
- ② CIRCUIT BREAKER, "52-G2", 800AF/300AT, ELECTRONIC TRIP, 65KAIC, 100% RATED 3 POLE, DRAWOUT, ELECTRICALLY OPERATED

NOTES:
 -UL 891, TYPE 1, NON-WALKIN, PAD MOUNT SWITCHBOARD
 -SWITCHBOARD RATING, 800A, 480/277VAC, 3PHS, 4W, 65KAIC
 -100% NEUTRAL
 -GROUND BAR
 -SILVER PLATED COPPER BUS
 -APPROXIMATE TOTAL SHIPPING WEIGHT: 1,800lbs

TOLERANCES (EXCEPT WHERE NOTED)	bcondron	7/21/2011
FEATURES	± .005	
SHEET METAL	± .020	
ANGULAR	± .5°	
REMOVE BURRS & SHARP CORNERS		

**800AMP PARALLELING SWITCHBOARD
SWBD-800A-480/3/4W**

