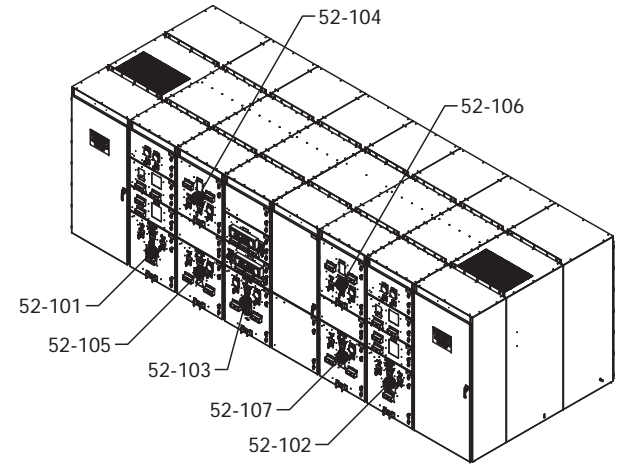
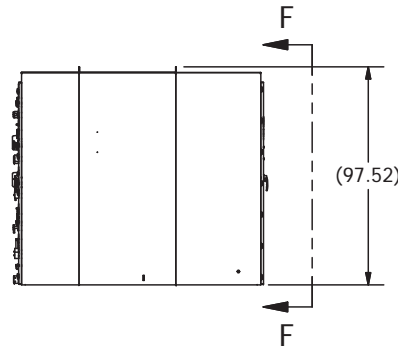



VIEW F-F
REAR VIEW



CIRCUIT BREAKER LIST	
ITEM	BREAKER DESCRIPTION
52-101	15kV, 1200A, 50kA, 3-PHASE, 3-WIRE, DRAWOUT VACUUM CIRCUIT BREAKER
52-102	15kV, 1200A, 50kA, 3-PHASE, 3-WIRE, DRAWOUT VACUUM CIRCUIT BREAKER
52-103	15kV, 1200A, 50kA, 3-PHASE, 3-WIRE, DRAWOUT VACUUM CIRCUIT BREAKER
52-104	15kV, 1200A, 50kA, 3-PHASE, 3-WIRE, DRAWOUT VACUUM CIRCUIT BREAKER
52-105	15kV, 1200A, 50kA, 3-PHASE, 3-WIRE, DRAWOUT VACUUM CIRCUIT BREAKER
52-106	15kV, 1200A, 50kA, 3-PHASE, 3-WIRE, DRAWOUT VACUUM CIRCUIT BREAKER
52-107	15kV, 1200A, 50kA, 3-PHASE, 3-WIRE, DRAWOUT VACUUM CIRCUIT BREAKER

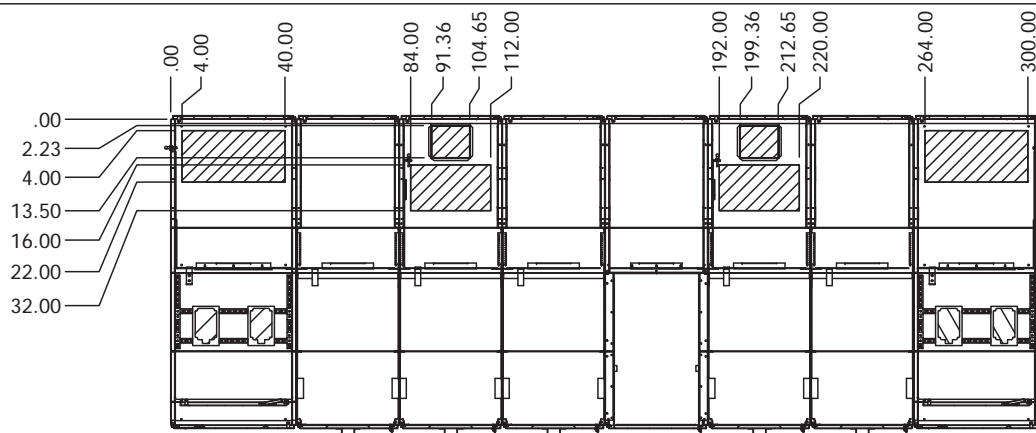
- NOTES:
- NEMA 1 SWITCHGEAR LINEUP, SMOOTH ANSI 61 GRAY FINISH.
 - GEAR RATING: 13.2kV, 1200A, 3 PHASE, 3 WIRE, 50KAIC.
 - 1/4 x 4 EPOXY COATED COPPER BUS W/ SILVER WASH ENDS.
 - 1/4 x 2 SILVER WASH COPPER GROUND BAR.
 - TOTAL APPROXIMATE WEIGHT: 26,400 LBS.

REVISION HISTORY			
REV	DESCRIPTION	DATE	APPROVED
A			
B			
C			
D			
E			

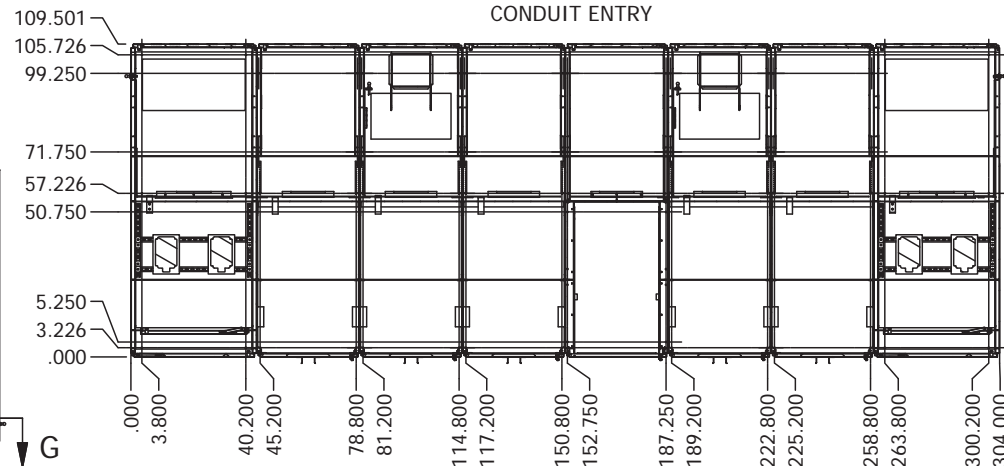
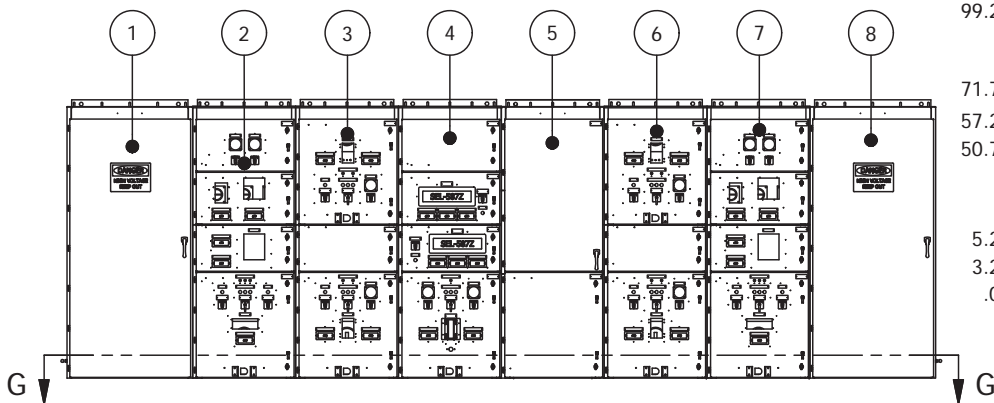

ESSMETRON
 1505 W. THIRD AVE
 DENVER CO 80223

DRAWN:
 CHECK:
 APPD:

15kV MEDIUM VOLTAGE MECHANICAL OUTLINE ELEVATION DRAWING		REV E
SIZE B	DWG NO.	
SCALE		SHEET 1 OF 7




SECTION G-G
CONDUIT ENTRY

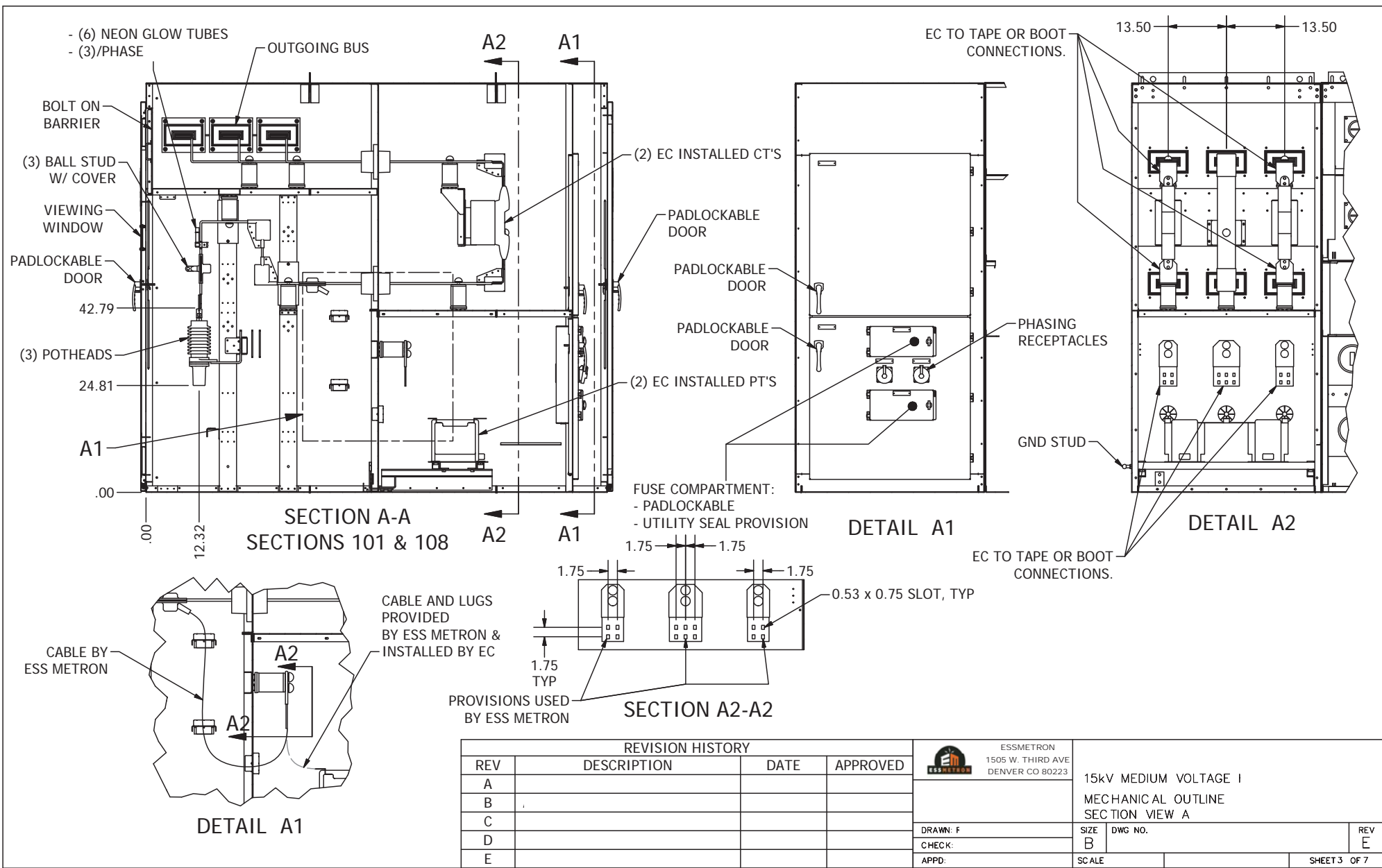


SECTION G-G
ANCHORING LOCATIONS
FOR 1/2" BOLTS


SECTION LIST				
ITEM	QTY	PART NUMBER	DESCRIPTION	WEIGHT
1	1	SECTION 101	UTILITY METER SECTION 44 W x 95 T x 107 D, LH	3,500 LBS
2	1	SECTION 102	MAIN BREAKER SECTION, 36 W x 95 T x 107 D, LH	3,400 LBS
3	1	SECTION 103	FDR BREAKER SECTION, 36 W x 95 T x 107 D, LH	3,600 LBS
4	1	SECTION 104	TIE BREAKER SECTION, 36 W x 95 T x 107 D	3,400 LBS
5	1	SECTION 105	TRANSITION SECTION, 36 W x 95 T x 107 D	2,000 LBS
6	1	SECTION 106	FDR BREAKER SECTION, 36 W x 95 T x 107 D, RH	3,600 LBS
7	1	SECTION 107	MAIN BREAKER SECTION, 36 W x 95 T x 107 D, RH	3,400 LBS
8	1	SECTION 108	UTILITY METER SECTION 44 W x 95 T x 107 D, RH	3,500 LBS

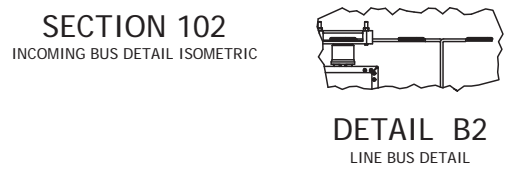
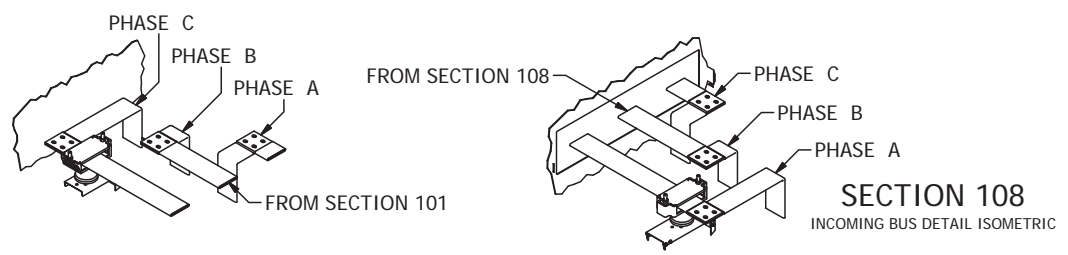
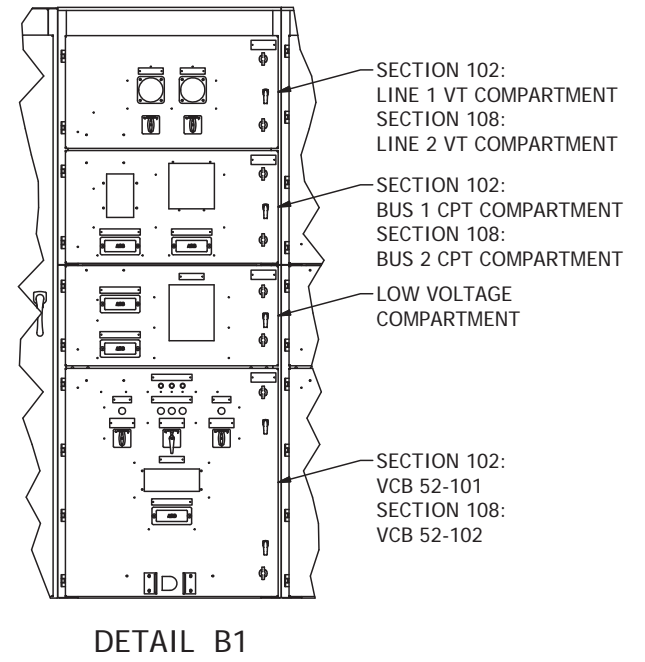
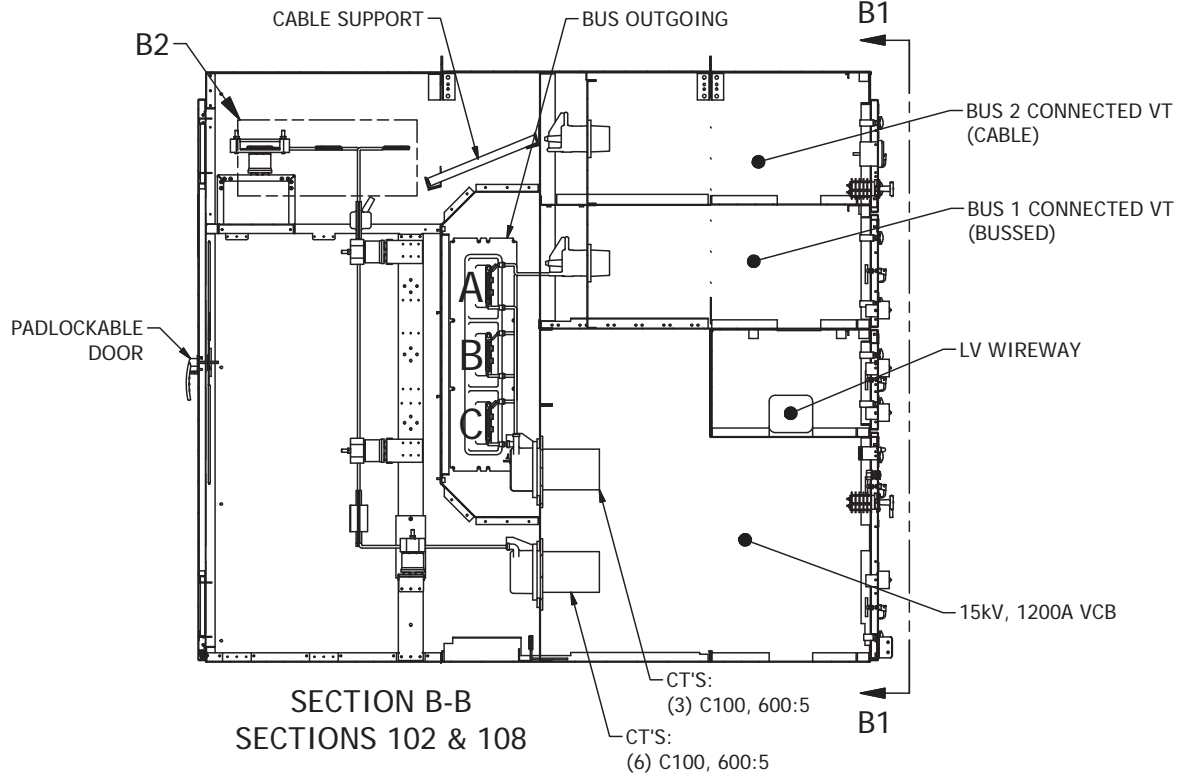
REVISION HISTORY			
REV	DESCRIPTION	DATE	APPROVED
A			
B			
C			
D			
E			

 ESSMETRON 1505 W. THIRD AVE DENVER CO 80223		15KV MEDIUM VOLTAGE MECHANICAL OUTLINE CABLE ENTRY LOCATIONS	
SCALE		SHEET 2 OF 7	




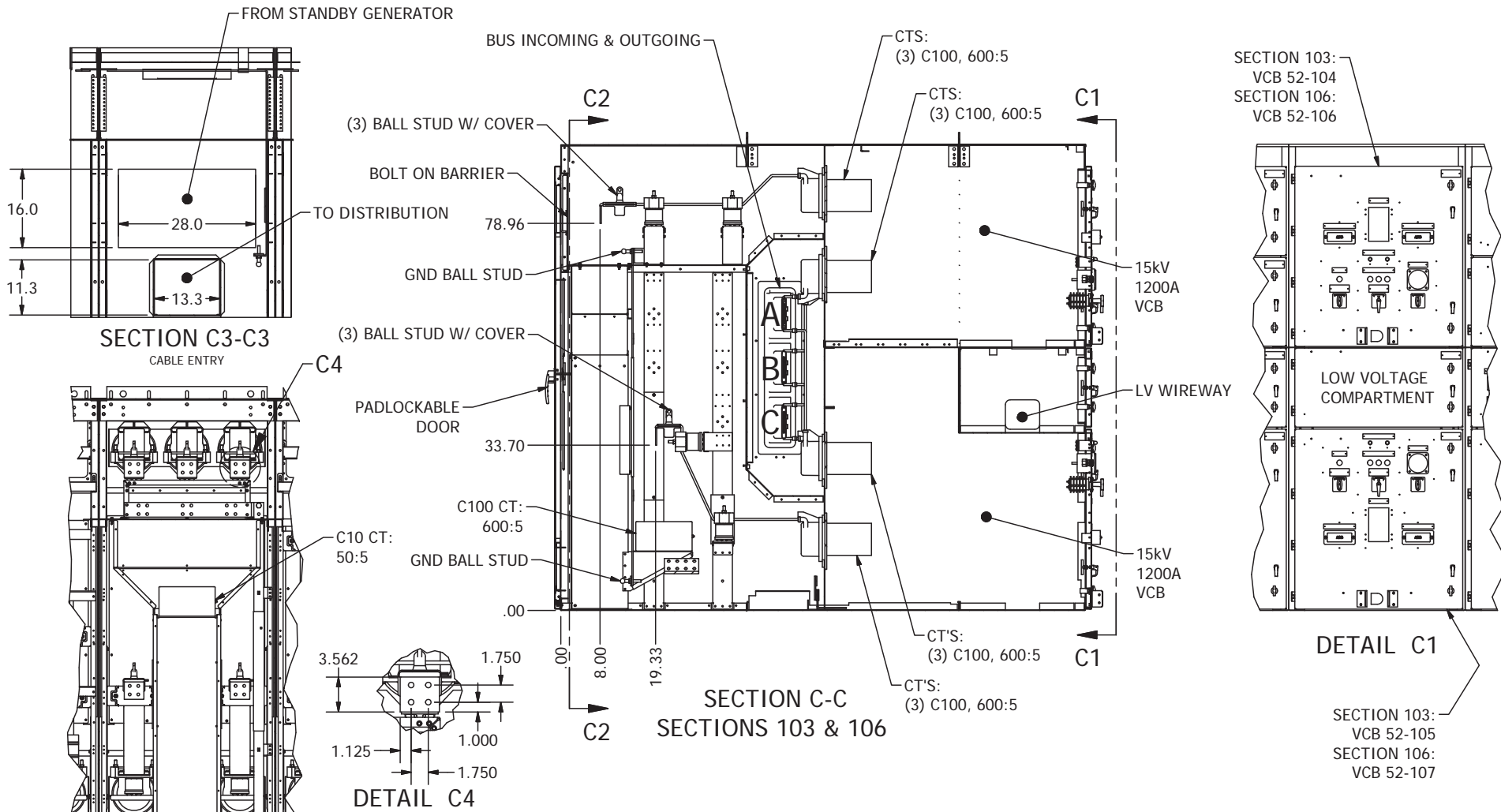
REVISION HISTORY			
REV	DESCRIPTION	DATE	APPROVED
A			
B			
C			
D			
E			

 ESSMETRON 1505 W. THIRD AVE DENVER CO 80223		15kV MEDIUM VOLTAGE I MECHANICAL OUTLINE SECTION VIEW A	
DRAWN: F CHECK: APPD:	SIZE B SCALE	DWG NO. REV E	SHEET 3 OF 7




REVISION HISTORY			
REV	DESCRIPTION	DATE	APPROVED
A			
B			
C			
D			
E			

 ESSMETRON 1505 W. THIRD AVE DENVER CO 80223		15KV MEDIUM VOLTAGE MECHANICAL OUTLINE SECTION VIEW B	
DRAWN: I	SIZE B	DWG NO.	REV E
CHECK:	SCALE		SHEET 4 OF 7
APPD:			



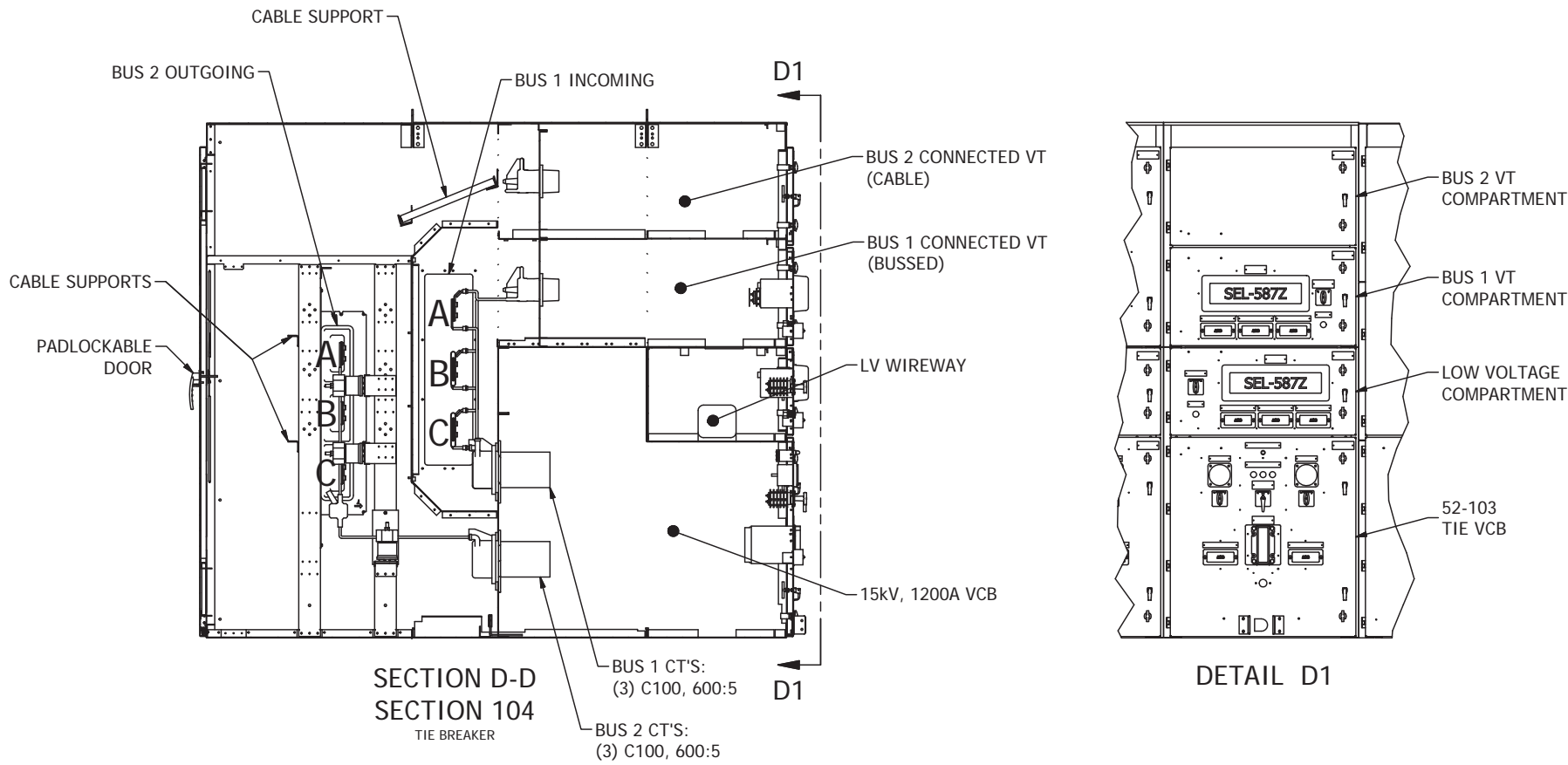
REVISION HISTORY			
REV	DESCRIPTION	DATE	APPROVED
A			
B			
C			
D			
E			


 ESSMETRON
 1505 W. THIRD AVE
 DENVER CO 80223


DRAWN: I
 CHECK:
 APPD:

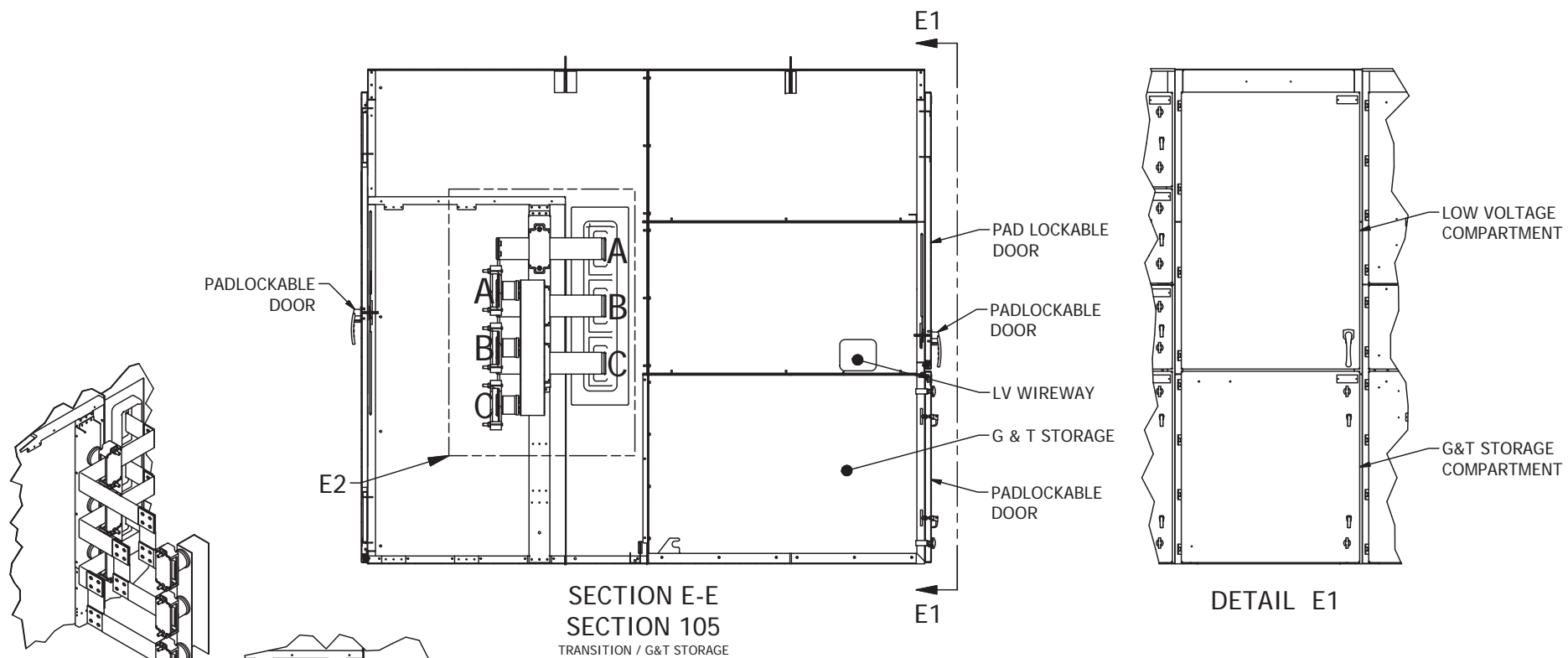
15kV MEDIUM VOLTAGE
 MECHANICAL OUTLINE
 SECTION VIEW C

SIZE	DWG NO.	REV
B		E
SCALE		SHEET 5 OF 7



REVISION HISTORY			
REV	DESCRIPTION	DATE	APPROVED
A			
B			
C			
D			
E			

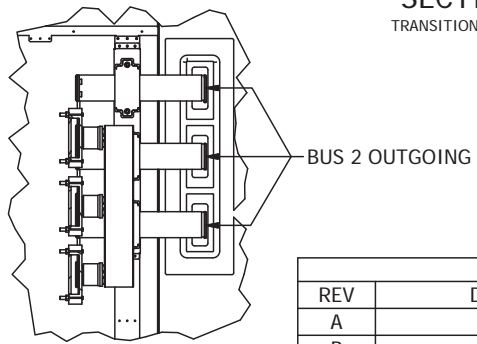
 ESSMETRON 1505 W. THIRD AVE DENVER CO 80223		15kV MEDIUM VOLTAGE MECHANICAL OUTLINE SECTION VIEW D	
DRAWN:	SIZE B	DWG NO.	REV E
CHECK:	SCALE		SHEET 6 OF 7
APPD:			



SECTION E-E
SECTION 105
TRANSITION / G&T STORAGE


DETAIL E1

DETAIL E2 ISOMETRIC



DETAIL E2
TRANSITION BUS DETAIL

REVISION HISTORY			
REV	DESCRIPTION	DATE	APPROVED
A			
B			
C			
D			
E			

 ESSMETRON 1505 W. THIRD AVE DENVER CO 80223		15KV MEDIUM VOLTAGE MECHANICAL OUTLINE SECTION VIEW E	
DRAWN: I	SIZE B	DWG NO.	REV E
CHECK:	SCALE		SHEET 7 OF 7
APPD:			